



# PRODUCT CATALOGUE

April  
2023

## HYGIENE DISPOSABLES

1 Bushbuck Close - Unit 2, Corporate Park - South, Midrand

Tel: 011 314 0714 • E-mail: [sales@hyg.co.za](mailto:sales@hyg.co.za) • Web: [www.hygienedisposable.co.za](http://www.hygienedisposable.co.za)

# HYGIENE DISPOSABLES

Hygiene Disposables (Pty) Ltd was established in 2004 in Silverton - Pretoria, supplying the only Food Grade Certified cleaning cloths in South Africa.

In 2008, we relocated to Corporate Park South, in Midrand. In 2018 we increasing our company's capacity. Consistency is our commodity, year after year there has been a vast amount of growth for our company. We recently expanded our business to Cape-Town and Kwa-Zulu Natal.

Proudly we have become Distributors & partners for various companies & agencies, namely: Sontara® , BCE, Numatic International, 3M, Byotrol, Greenworx and Twinsaver



## Our client base consists of:

Food Processing Plants, Hospitality and Catering Industries, Restaurants, Hotels, Pharmaceutical companies, Clinics, Hospitals, Beauty Salons, Hair Dressers, Industrial & Commercial laundries, Prisons, Butcheries, Abattoirs and your tier one fast food chains to name a few..

“By listening to our customer's “needs and requests” we have compiled a complete basket of products. We strive to provide the Hygiene Industry with the best possible range of Hygienic products that are Food Grade and Medically Certified, HACCP supported, convenient, quality and cost effective.

We are committed to our customer hygiene care and the improvement of the service we provide. Making our customer's needs the most important part of our business.

- CHRIS HANNA; Former CEO

# SERVICES



## FOOD GRADE

Suppliers of a wide range of Food Grade & Medically Approved products that cater for all areas of hygiene.



## IMPORTERS AND EXPORTERS

Established importers of disposable products; cleaning cloths.

Exporters to various countries within and around Africa.



## CHEMICALS

Our own range of Chemicals specifically formulated to the industry standards.



## SERVICES

Committed to Customer Satisfaction

- We provide Training;
- Water Treatment Solutions
- Assessing your Hygiene Needs and more...

## IMPORTERS / EXPORTERS

Hygiene Disposables are importers of various product ranges from reputable manufacturers across the world. Including a disposable and protective range that consists of : disposable gloves, hair nets, beard covers, aprons, watch strap covers, masks, sleeve protectors and more. We export our existing range of products to countries within and outside of Africa. We can assist with any importing and exporting requirements.

## DISTRIBUTORS

Sole Authorized Distributor of Sontara® AG Spunlace Materials, Partners with Green Worx Cleaning Solutions, 3M and Technical Concepts, BCE Commercial Catering Equipment, Numatic International as well as a distributor of Byotrol™ and Twinsaver products.

## MANUFACTURERS

Our Orchid Brush Ware range is of a high quality, food grade certified, and colour coded to prevent cross contamination. Our Brush ware is proudly manufactured in South Africa. Our Cape Town plant focuses on the manufacturing and distribution of food grade packaging for the Food Industry, Wax Interleavers, BOPP Discs, MGBK Paper, Wax Paper, Baking Paper, Food Grade Oil Filters.

## CERTIFICATION

We also manufacture a chemical range that is Intertek approved food safe and complies with Intertek EN 1276 Food Grade - Disinfectant, SANS 1828:2016 Food Grade as well as NRCS Act 5 / Act 29. Our Sontara® AG Food Grade and Medically Certified cloth range can proudly assist the food, medical (health care), hospitality and automotive industries with our high quality cloth range.



# QUALITY

## HYGIENE DISPOSABLES SUPPORT & SERVICES

Whether your facility requires chemicals for deep-cleaning or if you're looking for a complete hygiene solutions company, Hygiene Disposables can assist you with all the above mentioned requirements.

Our staff and partners are highly trained and provide solutions for all hygiene requirements.

We strive to stay in line with the latest technologies and utilise them to provide an unrivalled level of service to our clients.

Choosing a sole supplier can be more cost effective than using several suppliers / service providers delivering separate services.

Hygiene Disposables has benchmarked the "one stop shop" for all hygiene related services.



**DELIVERIES**

**CLEANING CHARTS**

**SAFETY DATA SHEETS**

**TRAINING**

**SWAB TESTING**

**WATER QUALITY ASSESS**

**FREE ASSESSMENTS**

**DOSING UNITS**

**EQUIPMENT**

**SERVICES**

*Put our services to the test, contact us for a free assessment today.*



# CLEANING CLOTHS

We pride ourselves as the "Food Grade Certified Cloth Supplier for Africa".

## SONTARA BATHROOM HAND WIPES + DISPOSABLE TOWELS

**Sontara** 



- Low lint, durable wiper manufactured from spunlaced woodpulp / polyester nonwoven with excellent strength and versatility
- Suitable for a wide range of cleaning applications including heavy cleaning, degreasing and spirit wiping
- Excellent absorbency with oils and wipes dry
- Consistent quality and performance with every wiper
- Cost Saver \*Disposable\*
- Excellent in hotels, restaurants, beauticians, casinos etc.
- Towels can be used in beauty & hair salons & for home use
- Protects clothing / shoulders in the application of hair dye when used as a tinting towel
- Strong & re-usable
- Food Grade approved by Intertek

#	CODE	COLOUR	DIMENSIONS	PACK SIZE	CASE SIZE
1.	<b>HAND WIPE / FACE CLOTH</b>				
	HYF 001	WHITE	300mm x 300mm	1000 pieces	10 packets of 100
2.	<b>HAND / HAIR TOWEL</b>				
	9951 SHD	WHITE	415mm X 830mm	100 pieces	1 packet of 100
3.	<b>BATH TOWEL</b>				
	9951 SBT	WHITE	1300mm X 830mm	50 pieces	1 packet of 50

## SONTARA INDUSTRY WIPES 50GSM

**Sontara** 



- Extra strong, colour coded wipes with outstanding performance
- High absorbency - 7 times it's own weight in liquid
- Grid-like structure for easy dirt pick up
- Low linting
- Colour coded to prevent cross-contamination
- Food Grade approved by Intertek

CODE	COLOUR	DIMENSIONS	PACK SIZE	CASE SIZE
INW 008	RED	420mm x 400mm - 50gsm	30 pieces	10 packets of 30
INW 009	YELLOW	420mm x 400mm - 50gsm	30 pieces	10 packets of 30
INW 010	GREEN	420mm x 400mm - 50gsm	30 pieces	10 packets of 30
INW 011	BLUE	420mm x 400mm - 50gsm	30 pieces	10 packets of 30
INW 012	WHITE	420mm x 400mm - 50gsm	30 pieces	10 packets of 30

## SONTARA EC ROLL

**Sontara** 



- PERFORATED low lint durable wiper manufactured from spunlaced woodpulp / polyester nonwoven with excellent strength and versatility
- Suitable for a wide range of cleaning applications including heavy cleaning, degreasing and spirit wiping
- Excellent absorbency with oils
- Consistent quality and performance with every wiper
- Food Grade approved by Intertek

CODE	COLOUR	DIMENSIONS	PACK SIZE
ECR 002	BLUE	380mm x 300mm	400 sheets
ECR 003	WHITE	330mm x 300mm	300 sheets

STD 001/2 MILD STEEL WALL MOUNTED STAND for EC Rolls

HYGIENE FOOD GRADE CLOTHS

# CLEANING CLOTHS

## 3M® HIGH PERFORMANCE MICRO FIBRE CLOTHS

These High Performance Micro Fibre cloths have been designed to provide the best technically possible surface cleaning cloth for the hygiene industry

The cloth has a special structure with double stitched edging. The ribbon-like micro fibres lift and trap particles and oils from the surface for an effective and safe cleaning process.

CODE	COLOUR	DIMENSIONS	PACK SIZE	CASE SIZE
3MMF/R	RED	360mm x 360mm	2 pieces	25 packets of 2
3MMF/Y	YELLOW	360mm x 360mm	2 pieces	25 packets of 2
3MMF/G	GREEN	360mm x 360mm	2 pieces	25 packets of 2
3MMF/B	BLUE	360mm x 360mm	2 pieces	25 packets of 2

**3M**



## MICRO FIBRE ECONO CLOTH

- Multi-purpose micro fibre cloths
- Colour coded to prevent cross-contamination

CODE	COLOUR	DIMENSIONS	GSM	Units
MFC11/R	RED	380mm x 380mm	200gr	each
MFC11/B	BLUE	380mm x 380mm	200gr	each
MFC11/Y	YELLOW	380mm x 380mm	200gr	each
MFC11/G	GREEN	380mm x 380mm	200gr	each
MFC11/W	WHITE	380mm x 380mm	200gr	each



## EVOLON MICRO FIBRE CLOTHS 100GSM

- Cleans and polishes surfaces faster and streak-free
- Super fine fibres absorb liquid and picks up dirt, grease, grime and is a dust magnet
- Absorbs up to 400% of it's own weight in liquid
- Lint Free and Colour coded to prevent cross-contamination
- Tested for food contact

CODE	COLOUR	DIMENSIONS	PACK SIZE
TE 104 R	RED	380mm x 400mm - 100gsm	25 pieces
TE 104 Y	YELLOW	380mm x 400mm - 100gsm	25 pieces
TE 104 G	GREEN	380mm x 400mm - 100gsm	25 pieces
TE 104 B	BLUE	380mm x 400mm - 100gsm	25 pieces
TE 104 W	WHITE	380mm x 400mm - 100gsm	25 pieces

**evolon®**



## GENERAL WIPE CLOTHS 45GSM

- Multi-purpose disposable cloths
- One-a-day use
- Colour coded to prevent cross-contamination

CODE	COLOUR	DIMENSIONS	PACK SIZE	CASE SIZE
GEN 001/R	RED	300mm x 600mm - 45gsm	50 pieces	40 packets of 50
GEN 001/Y	YELLOW	300mm x 600mm - 45gsm	50 pieces	40 packets of 50
GEN 001/G	GREEN	300mm x 600mm - 45gsm	50 pieces	40 packets of 50
GEN 001/B	BLUE	300mm x 600mm - 45gsm	50 pieces	40 packets of 50



## GENERAL WIPE CLOTH - ROLL 45GSM

- Multi-purpose disposable cloths in a roll form
- Roll is perforated
- One-a-day use
- Colour coded to prevent cross-contamination

CODE	COLOUR	DIMENSIONS	SHEETS	PACK SIZE
GENRP /R	RED	240mm x 500mm x 400m - 45gsm	800 sheets	1 Roll
GENRP /Y	YELLOW	240mm x 500mm x 400m - 45gsm	800 sheets	1 Roll
GENRP /G	GREEN	240mm x 500mm x 400m - 45gsm	800 sheets	1 Roll
GENRP /B	BLUE	240mm x 500mm x 400m - 45gsm	800 sheets	1 Roll



HYGIENE CLEANING CLOTHS

## DISPOSABLE PRODUCTS

Our extensive range of disposable products are personally sourced by our Directors - where we aim to deliver the highest quality products at the most affordable prices.

### LATEX GLOVES - WHITE - LIGHTLY POWDERED



**CODE**  
GLO 001 /M  
GLO 001 /L

**SIZE AVAILABLE**  
MEDIUM  
LARGE

**PACK SIZE**  
100 pieces per box  
100 pieces per box

**CASE SIZE**  
10 box per case  
10 box per case

### PE DISPOSABLE FOOD / DELI GLOVES - CLEAR



**CODE**  
HBT 001

**SIZE AVAILABLE**  
ONE SIZE

**PACK SIZE**  
100 pieces per packet

**CASE SIZE**  
100 packets per case

### PE DISPOSABLE FOOD / DELI GLOVES - BLUE



**CODE**  
HBT 002

**SIZE AVAILABLE**  
ONE SIZE

**PACK SIZE**  
100 pieces per packet

**CASE SIZE**  
100 packets per case

### HOUSEHOLD GLOVES - YELLOW - HIGH QUALITY



**CODE**  
HHG 001 /M  
HHG 001 /L

**SIZE AVAILABLE**  
MEDIUM  
LARGE

**PACK SIZE**  
1 pair  
1 pair

**CASE SIZE**  
120 packets per case  
120 packets per case

PRODUCT RANGE: PROTECTIVE

# DISPOSABLE PRODUCTS

## NITRILE GLOVES - BLUE - LATEX & POWDER FREE

**CODE**  
NGB 001 /M  
NGB 001 /L

**SIZE AVAILABLE**  
MEDIUM  
LARGE

**PACK SIZE**  
100 pieces per box  
100 pieces per box

**CASE SIZE**  
10 box per case  
10 box per case



## NITRILE GLOVES - GREEN - LONG CUFF

**CODE**  
NGG 001

**SIZE AVAILABLE**  
SIZE 10

**PACK SIZE**  
1 pair

**CASE SIZE**



## RED HEAT RESISTANT GLOVES - LEATHER

**CODE**  
RHRG 01

**SIZE AVAILABLE**  
ONE SIZE

**PACK SIZE**  
1 pair

**CASE SIZE**  
On Order



## GREY GLOVES - LEATHER

**CODE**  
GGG 001

**SIZE AVAILABLE**  
ONE SIZE

**PACK SIZE**  
1 pair

**CASE SIZE**  
On Order



## HAIR NETS

CODE	COLOUR	SPECIFICATIONS	PACK SIZE	CASE SIZE
NET 006	WHITE	21" - DOUBLE STITCH	100 pieces	10 pkts per case
NET 002	RED	18" - SINGLE STITCH	100 pieces	10 pkts per case
NET 003	YELLOW	18" - SINGLE STITCH	100 pieces	10 pkts per case
NET 004	GREEN	21" - SINGLE STITCH	100 pieces	10 pkts per case
NET 005	BLUE	18" - SINGLE STITCH	100 pieces	10 pkts per case
NET 007	PINK	18" - SINGLE STITCH	100 pieces	10 pkts per case
NET 011	BLACK	18" - SINGLE STITCH	100 pieces	10 pkts per case



PRODUCT RANGE: PROTECTIVE



## 3 PLY SURGICAL FACE MASK - BLUE & WHITE EAR LOOP



**CODE**  
MSK 002

**PACK SIZE**  
50 pieces per box

**CASE SIZE**

## FFP2 FOAM NOSE STRIP - SABS APPROVED



**CODE**  
MSK 003

**PACK SIZE**  
20 pieces per box

**CASE SIZE**

## FFP2 FOAM NOSE WITH VALVE (FILTERS WATER)



**CODE**  
MSK 005

**PACK SIZE**  
Each

**CASE SIZE**

*\*Recommended for use with Byotrol Fogging Unit*

PRODUCT RANGE: PROTECTIVE

# DISPOSABLE PRODUCTS

## DISPOSABLE PE APRONS - 10 MICRON

**CODE**  
DSA 001  
DSA 002  
DSA 003  
DSA 004  
DSA 005

**COLOUR**  
WHITE  
BLUE  
GREEN  
RED  
YELLOW

**PACK SIZE**  
100 pieces per pack  
100 pieces per pack  
100 pieces per pack  
100 pieces per pack  
100 pieces per pack

**CASE SIZE**  
10 packets per case  
10 packets per case  
10 packets per case  
10 packets per case  
10 packets per case



## DISPOSABLE PE SMOCKS 30 MICRON

**#** **CODE** **COLOUR**  
1. SMO 001 WHITE

**DIMENSIONS**  
710mm x 1250mm

**PACK SIZE**  
50 pieces

**PVC APRON**  
**#** **CODE** **COLOUR**  
2. PVCA 01 WHITE

**DIMENSIONS**  
700mm x 1100mm

**PACK SIZE**  
Each

**BLOOD & FAT APRON**  
**#** **CODE** **COLOUR**  
3. BFA 001 WHITE

**DIMENSIONS**  
+- 700mm x 1100mm (700g)

**PACK SIZE**  
Each

2.

3.

1.



## HEAVY DUTY APRONS

- Food Grade Polyurathane
- guaranteed not to crack, peel or harden
- Light weight comfortable
- Hygienic and easy to clean
- Outlasts any comparative product on the market

**CODE** **COLOUR**  
APR 001 WHITE  
APR 002 RED  
APR 003 YELLOW  
APR 004 GREEN  
APR 005 BLUE

**DIMENSIONS**  
90cm x 120cm  
90cm x 120cm  
90cm x 120cm  
90cm x 120cm  
90cm x 120cm

**PACK SIZE**  
Each  
Each  
Each  
Each  
Each



## VISITORS COATS AND COVERALL

**#** **CODE** **PRODUCT DESCRIPTION**  
4. DVCNW NON-WOVEN VISITORS COATS (Velcro)  
5. DSP 010 NON-WOVEN COVERALL (Zip)

**SIZES**  
MEDIUM  
LARGE  
X-LARGE  
XX-LARGE

**PACK SIZE**  
Each

Each

1.

2.



\* Confirm available sizes with office when placing your order

PRODUCT RANGE: PROTECTIVE

### DISPOSABLE SLEEVE PROTECTORS - WHITE - PLASTIC - 20 MICRON



**CODE**  
DSP 001

**PACK SIZE**  
100 pieces per packet

**CASE SIZE**  
10 packets per case

### DUST GOGGLES - WIDE VISION



**CODE**  
GOG 001

**PACK SIZE**  
10 pieces per packet

**CASE SIZE**  
10 packets per case

### NON-WOVEN WATCH STRAP COVER - WHITE



**CODE**  
WAC 001

**PACK SIZE**  
100 pieces per packet

**CASE SIZE**  
10 packets per case

PRODUCT RANGE: PROTECTIVE

## DISPOSABLE PRODUCTS

### DISPOSABLE SHOE COVERS - BLUE - PLASTIC - 20 MICRON

**CODE**  
DSP 003

**PACK SIZE**  
100 pieces per packet

**CASE SIZE**  
10 packets per case



### NON-WOVEN BEARD COVERS - WHITE HEAD LOOP

**CODE**  
BCW 001

**PACK SIZE**  
100 pieces per packet

**CASE SIZE**  
10 packets per case



### DISPOSABLE SLEEVE PROTECTORS - WHITE - PLASTIC - 20 MICRON

**CODE**  
DSP 001

**PACK SIZE**  
100 pieces per packet

**CASE SIZE**  
10 packets per case



PRODUCT RANGE: PROTECTIVE



## BRUSH WARE

Brush Ware range is manufactured in South Africa - Food Grade and made of the highest certified Sasol products. They are colour coded to prevent cross contamination.

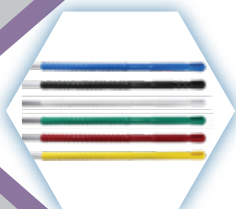
### ALUMINIUM BROOM / SQUEEGEE HANDLE



Used with BROOM HEADS and SQUEEGEE HEADS

CODE	COLOUR	DIMENSIONS	PACK SIZE
HA 00P / R	RED	25mm x 1300mm	Each
HA 00P / Y	YELLOW	25mm x 1300mm	Each
HA 00P / G	GREEN	25mm x 1300mm	Each
HA 00P / B	BLUE	25mm x 1300mm	Each
HA 00P / W	WHITE	25mm x 1300mm	Each
HA 00P / O	ORANGE	25mm x 1300mm	Each
HA 00P / BLK	BLACK	25mm x 1300mm	Each

### NEW ALUMINIUM BROOM / SQUEEGEE HANDLE



Used with BROOM HEADS and SQUEEGEE HEADS

CODE	COLOUR	DIMENSIONS	PACK SIZE
HA 00Q/R	RED	25mm x 1500mm	Each
HA 00Q/Y	YELLOW	25mm x 1500mm	Each
HA 00Q/G	GREEN	25mm x 1500mm	Each
HA 00Q/B	BLUE	25mm x 1500mm	Each
HA 00Q/W	WHITE	25mm x 1500mm	Each
HA 00Q/BLK	BLACK	25mm x 1500mm	Each

### ALUMINIUM MOP HANDLE



CODE	COLOUR	DIMENSIONS	PACK SIZE
HA 002 / R	RED	22mm x 1500mm	Each
HA 002 / Y	YELLOW	22mm x 1500mm	Each
HA 002 / G	GREEN	22mm x 1500mm	Each
HA 002 / B	BLUE	22mm x 1500mm	Each
HA 002 / W	WHITE	22mm x 1500mm	Each
HA 002 / BLK	BLACK	22mm x 1500mm	Each

### HYGIENE BROOM HEAD



COLOUR	300mm SOFT	300mm STIFF	450mm SOFT	450mm STIFF
RED	BRO 001 / R	BRO 002 / R	BRO 003 / R	BRO 004 / R
YELLOW	BRO 001 / Y	BRO 002 / Y	BRO 003 / Y	BRO 004 / Y
GREEN	BRO 001 / G	BRO 002 / G	BRO 003 / G	BRO 004 / G
BLUE	BRO 001 / B	BRO 002 / B	BRO 003 / B	BRO 004 / B
WHITE	BRO 001 / W	BRO 002 / W	BRO 003 / W	BRO 004 / W
ORANGE	BRO 001 / O	BRO 002 / O	BRO 003 / O	BRO 004 / O
BLACK	BRO 001 / BLK	BRO 002 / BLK	BRO 003 / BLK	BRO 004 / BLK

### DOUBLE BLADED SQUEEGEE HEAD AND HANDLE - 550MM



CODE	COLOUR	DIMENSIONS	PACK SIZE
SQC 01 / R	RED	550mm in length	Each
SQC 01 / Y	YELLOW	550mm in length	Each
SQC 01 / G	GREEN	550mm in length	Each
SQC 01 / B	BLUE	550mm in length	Each
SQC 01 / W	WHITE	550mm in length	Each
SQC 01 / O	ORANGE	550mm in length	Each
SQC 01 / BLK	BLACK	550mm in length	Each

PRODUCT RANGE: BRUSH WARE

## HYGIENE NAIL BRUSH

CODE	COLOUR	with Wire	PACK SIZE
HNB 01 /R	RED	NBSS 01 /R	Each
HNB 01 /Y	YELLOW	NBSS 01 /Y	Each
HNB 01 /G	GREEN	NBSS 01 /G	Each
HNB 01 /B	BLUE	NBSS 01 /B	Each
HNB 01 /W	WHITE	NBSS 01 /W	Each
HNB 01 /O	ORANGE	NBSS 01 /O	Each
HNB 01 /BLK	BLACK	NBSS 01 /BLK	Each



## SHORT HANDLE BRUSH MEDIUM / STIFF BRISTLES

COLOUR	MEDIUM CODE	STIFF CODE	PACK SIZE
RED	SSH 01 / R	SSH 02 / R	Each
YELLOW	SSH 01 / Y	SSH 02 / Y	Each
GREEN	SSH 01 / G	SSH 02 / G	Each
BLUE	SSH 01 / B	SSH 02 / B	Each
WHITE	SSH 01 / W	SSH 02 / W	Each
ORANGE	SSH 01 / O	SSH 02 / O	Each
BLACK	SSH 01 / BLK	SSH 02 / BLK	Each



## WASH UP BRUSH

CODE	COLOUR	PACK SIZE
WUB 001 /R	RED	Each
WUB 001 /Y	YELLOW	Each
WUB 001 /G	GREEN	Each
WUB 001 /B	BLUE	Each
WUB 001 /W	WHITE	Each
WUB 001 /O	ORANGE	Each
WUB 001 /BLK	BLACK	Each



## PLATFORM BROOM -WOOD

CODE	BRISTLES	SIZE	PACK SIZE
17303	SOFT	450mm	Each
17304	STIFF	450mm	Each
17403	SOFT	600mm	Each
17404	STIFF	600mm	Each



## TOILET BRUSH COMPLETE

CODE	COLOUR	PACK SIZE
TB 01C	WHITE	1 Set



## ALUMINIUM MOP HANDLE WITH CLIP



**CODE**  
 MHWC / R  
 MHWC / Y  
 MHWC / G  
 MHWC / B  
 MHWC / W  
 MHWC / O  
 MHWC / BLK

**COLOUR**  
 RED End Cap  
 YELLOW End Cap  
 GREEN End Cap  
 BLUE End Cap  
 WHITE End Cap  
 ORANGE End Cap  
 BLACK End Cap

**DIMENSIONS**  
 25mm x 1560mm  
 25mm x 1560mm  
 25mm x 1560mm  
 25mm x 1560mm  
 25mm x 1560mm  
 25mm x 1560mm  
 25mm x 1560mm

**PACK SIZE**  
 Each  
 Each  
 Each  
 Each  
 Each  
 Each  
 Each

## PLASTIC MOP CLIP



**CODE**  
 CL 001 / R  
 CL 001 / Y  
 CL 001 / G  
 CL 001 / B  
 CL 001 / W

**COLOUR**  
 RED  
 YELLOW  
 GREEN  
 BLUE  
 WHITE

**PACK SIZE**  
 1 Piece  
 1 Piece  
 1 Piece  
 1 Piece  
 1 Piece

## HYGIENE SPUNLACE MOP HEAD



**CODE**  
 SON 001

**COLOUR**  
 WHITE Tags Indicate Colour

**SIZE**  
 280g

**PACK SIZE**  
 1 Piece

## SPAGHETTI MOP HEAD



**CODE**  
 SPA 02 / R  
 SPA 02 / Y  
 SPA 02 / G  
 SPA 02 / B  
 SPA 02 / W

**COLOUR**  
 RED  
 YELLOW  
 GREEN  
 BLUE  
 WHITE

**WEBBING**  
 38mm  
 38mm  
 38mm  
 38mm  
 38mm

**SIZE**  
 400g  
 400g  
 400g  
 400g  
 400g

**PACK SIZE**  
 1 Piece  
 1 Piece  
 1 Piece  
 1 Piece  
 1 Piece

## MICRO FIBRE MOP HEAD



**CODE**  
 MFMH

**COLOUR**  
 GREY Tags Indicate Colour

**SIZE**  
 300g

**PACK SIZE**  
 1 Piece

PRODUCT RANGE: BRUSH WARE

# STANDARD BRUSH WARE

## DUST MOP - FRAME

**CODE**  
DMSF60  
DMSF100

**COLOUR**  
Colour to be Advised  
Colour to be Advised

**SIZE**  
60cm  
100cm

**PACK SIZE**  
1 Piece  
1 Piece



## DUST MOP REPLACEMENT SLEEVE

**CODE**  
DMS C6  
DMS C10

**COLOUR**  
Colour to be Advised  
Colour to be Advised

**SIZE**  
60cm  
100cm

**PACK SIZE**  
1 Piece  
1 Piece



## ALUMINIUM TOOL FLEX / STORAGE RAIL

**COLOUR**  
RED  
YELLOW  
GREEN  
BLUE  
WHITE  
BLACK

**250mm**  
TR 250 /R  
TR 250 /Y  
TR 250 /G  
TR 250 /B  
TR 250 /W  
TR 250 /BLK

**500mm**  
TR 500 /R  
TR 500 /Y  
TR 500 /G  
TR 500 /B  
TR 500 /W  
TR 500 /BLK

**900mm**  
TR 900 /R  
TR 900 /Y  
TR 900 /G  
TR 900 /B  
TR 900 /W  
TR 900 /BLK



## TOOLFLEX BRACKET

**CODE**  
B 2030

**COLOUR**  
WHITE/BLACK

**DIMENSIONS**  
20mm - 30mm

**PACK SIZE**  
1 Piece



## STAINLESS STEEL HOOK

**CODE**  
HOOK2

**COLOUR**  
STEEL

**PACK SIZE**  
1 Piece



PRODUCT RANGE: BRUSH WARE





## STANDARD BRUSH WARE

### PLASTIC WINDOW SQUEEGEE



**CODE**  
WWH 01

**COLOUR**  
BLUE

**SIZE**

**PACK SIZE**  
1 Piece

### WINDOW SQUEEGEE HEAD



**CODE**  
WSQ 35

**SIZE**  
35cm

**PACK SIZE**  
1 Piece

### WINDOW WASHER HEAD



**CODE**  
WWA35  
WWR35

**SIZE**  
35cm  
35cm

**PACK SIZE**  
1 Piece(unit)  
1 Piece(replacement sleeve)

### TELESCOPIC POLE



**CODE**  
TP 400

**SIZE**  
2m , 4m & 6m

**PACK SIZE**  
1 Piece

### DUSTPAN WITH LONG HANDLE



**CODE**  
DPLH /BLK

**COLOUR**  
BLACK

PRODUCT RANGE: BRUSH WARE



# STANDARD BRUSH WARE

## DUSTPAN SHORT HANDLE & BRUSH

### CODE

DP4SET / R  
DP4SET / Y  
DP4SET / G  
DP4SET / B  
DP4SET / W  
DP4SET / BLK

### COLOUR

RED  
YELLOW  
GREEN  
BLUE  
WHITE  
BLACK



## DUSTPAN INDUSTRIAL

### CODE

DPI 001 / R  
DPI 001 / Y  
DPI 001 / G  
DPI 001 / B  
DPI 001 / W

### COLOUR

RED  
YELLOW  
GREEN  
BLUE  
WHITE



## INGREDIENT SCOOP HEAVY DUTY 0,2L

### CODE

BARS 001

### COLOUR

CLEAR



## PLASTIC SCRAPER

### SMALL

75mm Wide x 205mm Length

### CODE

SCR 003 / R  
SCR 003 / Y  
SCR 003 / G  
SCR 003 / B  
SCR 003 / W

### COLOUR

RED  
YELLOW  
GREEN  
BLUE  
WHITE

### LARGE

115mm Wide x 250mm Length

### CODE

SCR 004 / R  
SCR 004 / Y  
SCR 004 / G  
SCR 004 / B  
SCR 004 / W

### COLOUR

RED  
YELLOW  
GREEN  
BLUE  
WHITE



## PLASTIC SCOOP

### SMALL

245mm Length x 100mm Wide  
x 55mm Height

### CODE

SCO 002 / R  
SCO 002 / Y  
SCO 002 / G  
SCO 002 / B  
SCO 002 / W

### COLOUR

RED  
YELLOW  
GREEN  
BLUE  
WHITE

### LARGE

380mm Length x 160mm Wide  
x 85mm Height

### CODE

SCO 001 / R  
SCO 001 / Y  
SCO 001 / G  
SCO 001 / B  
SCO 001 / W

### COLOUR

RED  
YELLOW  
GREEN  
BLUE  
WHITE



PRODUCT RANGE: BRUSH WARE

## BUCKETS & DUSTBINS

*Our range of buckets and trolleys are high quality products at the most affordable prices*

### 5L BUCKET



**CODE**  
5LT 01 / R  
5LT 01 / Y  
5LT 01 / G  
5LT 01 / B  
5LT 01 / W

**COLOUR**  
RED  
YELLOW  
GREEN  
BLUE  
WHITE

5LT03/LIDS

COLOUR MATCHING LIDS AVAILABLE



### 10L PLASTIC BUCKET HEAVY DUTY (SQUARE)



**CODE**  
10LT3 / R  
10LT3 / Y  
10LT3 / G  
10LT3 / B  
10LT3 / W

**COLOUR**  
RED  
YELLOW  
GREEN  
BLUE  
WHITE

### 20L PLASTIC BUCKET CAN BE USED WITH TROLLEYS



**CODE**  
20LT4 / R  
20LT4 / Y  
20LT4 / G  
20LT4 / B  
20LT4 / W  
20LT4 / O  
20LT4 / BLK

**COLOUR**  
RED  
YELLOW  
GREEN  
BLUE  
WHITE  
ORANGE  
BLACK

### 25L PLASTIC BUCKET WITH LIP. CAN BE USED WITH TROLLEYS



**CODE**  
25LT5 / R  
25LT5 / Y  
25LT5 / G  
25LT5 / B  
25LT5 / W  
25LT5 / O  
25LT5 / BLK

**COLOUR**  
RED  
YELLOW  
GREEN  
BLUE  
WHITE  
ORANGE  
BLACK

PRODUCT RANGE: BUCKETS & DUSTBINS

# BUCKETS & DUSTBINS

## 20L SINGLE BUCKET + WRINGER PLASTIC

### CODE

SMT20 / R  
SMT20 / Y  
SMT20 / G  
SMT20 / B

### COLOUR

RED  
YELLOW  
GREEN  
BLUE



## 36L SINGLE BUCKET + WRINGER PLASTIC

### CODE

SMT36 / R  
SMT36 / Y  
SMT36 / G  
SMT36 / B

### COLOUR

RED  
YELLOW  
GREEN  
BLUE



## 36L BUMPER BUCKET AND METAL WRINGER

### CODE

BBT36

### COLOUR

STEEL



## 50L DOUBLE BUCKET AND WRINGER (PLASTIC)

### CODE

DMT50

### COLOUR

RED + BLUE



## 25L HEAVY DUTY BUCKET AND FRAME

### CODE

SST25

### COLOUR

25L SINGLE BUCKET TROLLEY STEEL ONLY

### PACK SIZE

Single Red



PRODUCT RANGE: BUCKETS & DUSTBINS



## 50L DOUBLE BUCKET TROLLEY + WRINGER (STEEL FRAME)



**CODE**  
SST50

**COLOUR**  
RED + BLUE

**PACK SIZE**

## REPLACEMENT GEERPRES WRINGER (STEEL)



**CODE**  
RWPP

**COLOUR**  
STEEL

**PACK SIZE**

## REPLACEMENT GEERPRES WRINGER (PLASTIC) 50L



**CODE**  
RWPP2

**COLOUR**  
YELLOW

**PACK SIZE**

*\*Only for 50L Double bucket*

## DUST BIN / STORAGE BIN + LID



**CODE**  
DBC 001/R  
DBC 001/Y  
DBC 001/G  
DBC 001/B  
DBC 001/W  
DBC 001/BLK

**COLOUR**  
RED  
YELLOW  
GREEN  
BLUE  
WHITE  
BLACK

**SIZE**  
85L  
85L  
85L  
85L  
85L  
85L

**NOTE**  
FOOD GRADE  
FOOD GRADE  
FOOD GRADE  
FOOD GRADE  
FOOD GRADE  
FOOD GRADE

## 120L WASTE BIN WITH WHEELS



**CODE**  
DBC004/B  
DBC004/BLK  
DBC004/G  
DBC004/O  
DBC004/R  
DBC004/W  
DBC004/Y

**SIZE**  
120L  
120L  
120L  
120L  
120L  
120L  
120L

**COLOUR**  
BLUE  
BLACK  
GREEN  
ORANGE  
RED  
WHITE  
YELLOW

# PRODUCT RANGE: BUCKETS & DUSTBINS

## BUCKETS & DUSTBINS

### 240L WASTE BIN WITH WHEELS

CODE	SIZE	COLOUR
DBC002/B	240L	BLUE
DBC002/BLK	240L	BLACK
DBC002/G	240L	GREEN
DBC002/O	240L	ORANGE
DBC002/R	240L	RED
DBC002/W	240L	WHITE
DBC002/Y	240L	YELLOW



### BLACK REFUSE BAGS

CODE	PACK SIZE	MICRON
BRB 25	20 pieces (per pack)	23 Micron
BRB 40	20 pieces (per pack)	40 Micron



### MOBILE WHEELS FOR DUSTBINS / REFUSE BINS

CODE	DESCRIPTION	CASE SIZE
WFDB 85	STEEL	Each



### 2 PIECE WET FLOOR SIGN

CODE	DESCRIPTION	PACK SIZE
WFS 01	YELLOW PLASTIC	Each



### 2 PIECE WET FLOOR SIGN GALVANISED STEEL

CODE	DESCRIPTION	PACK SIZE
WFS 03	GALVANISED STEEL	Each

*\*Stainless Steel Available*



PRODUCT RANGE: BUCKETS & DUSTBINS



### WALL MOUNTED DUSTBIN - PLASTIC



**CODE**  
DBWM 01

**DIMENSIONS**  
45 x 33 x 22cm

**PACK SIZE**  
Each

### WALL MOUNTED DUSTBIN - STAINLESS STEEL



**CODE**  
DBWM SS01  
DBWM SS02

**DIMENSIONS**  
30 x 30 x 20cm  
46 x 37 x 20cm

**PACK**  
Each  
Each

**SIZE**  
SMALL  
LARGE

### SANI BIN - PLASTIC



**CODE**  
SHE 001

**SIZE**  
19L

**PACK SIZE**  
Each

### SANI BIN - STAINLESS STEEL



**CODE**  
SHE 002

**DIMENSIONS**  
33 x 28 x 18cm

**PACK SIZE**  
Each

### SANI BIN LINER



**CODE**  
BBB 001  
SHE004

**DIMENSIONS**  
59 x 62cm  
SMALL

**COLOUR**  
BLUE  
WHITE

**PACK SIZE**  
100 pieces per packet

# BINS & DISPENSERS

## SOAP DISPENSERS - TOP UP

CODE	DESCRIPTION	MATERIAL	SIZE
DISP 001	SOAP DISPENSER	PLASTIC	1L
DISPS	SOAP DISPENSER	S / STEEL	1L

DISP001



DISPS



## SOAP DISPENSERS - HEAVY DUTY

CODE	DESCRIPTION	TYPE	MATERIAL	SIZE
DISP 002	SOAP DISPENSER	SOAP	PLASTIC	800ml
DISP 03	FOAM SOAP DISPENSER	FOAM	PLASTIC	800ml

DISP002



DISP 03



## ATOMIZER FINE MIST SPRAY BOTTLE

CODE	DESCRIPTION	MATERIAL	SIZE
GRBHD4ATOM	WHITE	PLASTIC	300ml



## PLASTIC SPRAY BOTTLE

CODE	DESCRIPTION	MATERIAL	SIZE
GRB 001	GRADUATED	PLASTIC	1000ml



## TRIGGERS FOR SPRAY BOTTLES

CODE	COLOUR
TRI 001 / R	RED
TRI 001 / Y	YELLOW
TRI 001 / G	GREEN
TRI 001 / B	BLUE
TRI 001 / W	WHITE



## PUSH-PULL CAP FOR 1L BOTTLE

CODE	COLOUR
PPC 001	RED + GREEN PLASTIC



## 10L BUDDY JUG FOR CHEMICALS

CODE	COLOUR
BUDJUG	PLASTIC

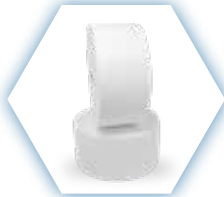


PRODUCT RANGE: WASHROOM SOLUTIONS



## PAPER & DISPENSERS

We have a wide range of paper products that we can assist you with for all areas of your facilities.



### GARAGE ROLL 21GSM

CODE GR 210 DIMENSIONS 200mm 1100m

### ECONO GARAGE ROLL 21GSM

CODE GR 1600 DIMENSIONS 150mm x 750m



### JUMBO ROLL STAND

CODE KC-SA408591 DIMENSIONS 41 x 43 x 91cm



### BARREL ROLL 21GSM

CODE PAP 002 DIMENSIONS 210mm x 360m QTY 4 Rolls

\*Perforated  
\*Full Core / Centre Feed



# CODE	PRODUCT + INFORMATION
1.STDP 003	STEEL WALL MOUNTED STAND
2.DIPCF	PLASTIC CENTRE FEED DISPENSER DIMENSION : 27 x 12 x 36 cm



### BARREL ROLL MINI 21GSM

CODE PAMP 01 DIMENSIONS 210mm x 140m QTY 6 Rolls



### MINI BARRELL ROLL DISPENSER

CODE DIPCF MATERIAL PLASTIC CENTRE FEED DISPENSER



### REEL / REFLEX TOWEL 35GSM

CODE REEL DIMENSIONS 200mm x 150m QTY 6 Rolls



### AUTO CUT DISPENSER

CODE TS-0936 MATERIAL PLASTIC

PRODUCT RANGE: BUCKETS & DUSTBINS

# BINS & DISPENSERS

## INTERFOLD PAPER WIPES 2 PLY(Z FOLD)

CODE	DIMENSIONS	QTY
PAPINT	20 x 120	2400 pieces

#	CODE	PRODUCT + INFORMATION	DIMENSION
1.	DIFSS 01	S/STEEL INTERFOLD DISPENSER	28.5 x 36.5 x 10 cm
2.	DIF 001	PLASTIC INTERFOLD DISPENSER	27.5 x 37.5 x 10.7 cm



## TOILET PAPER 2 PLY 33GSM

CODE	DESCRIPTION	QTY
TPLY 2V	350 sheets VIRGIN	48 Rolls

## TOILET PAPER 1 PLY 19GSM

CODE	DESCRIPTION	QTY
TPLY 1V	500 sheets VIRGIN	48 Rolls



## TOILET PAPER HOLDER

#	CODE	PRODUCT + INFORMATION	COLOUR
1.	TRH 301	3 ROLL TOILET PAPER HOLDER	WHITE
	TRH 302	3 ROLL TOILET PAPER HOLDER	S/STEEL
2.	TRH 201	2 ROLL TOILET PAPER HOLDER	WHITE
	TRH 202	2 ROLL TOILET PAPER HOLDER	S/STEEL



## JUMBO TOILET ROLL DECA

CODE	DIMENSIONS	QTY
JTRD 01	100mm x 375m *700g per roll	10 Rolls



## JUMBO DECA TOILET PAPER DISPENSER

CODE	MATERIAL
TS-0529	WHITE PLASTIC





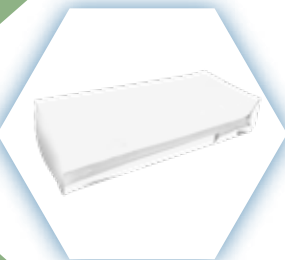
## 1PLY INTERFOLD HAND TOWEL

**Green Choice**  
Single sheet dispensing, reduces waste  
Cost effective quality and absorbency  
Sheet Size: 240mm x 335mm  
20 packs of 120 per case (2400 sheets per case)

**CODE**  
TS-0315

**DESCRIPTION**  
Twinsaver Interfold 2400

**PACK SIZE**  
20 per Case



## 1 PLY C-FOLD HAND TOWEL

**Green Choice**  
Controlled sheet dispensing, reduces waste  
Cost effective quality and absorbency  
Sheet Size: 240mm x 330mm  
20 packs of 100 per case (2000 sheets per case)

**CODE**  
TS-0319

**DESCRIPTION**  
Twinsaver Flat 2000

**PACK SIZE**  
20 per Case



## 2PLY M-FOLD HAND TOWEL

**Green Choice**  
Super strong, super absorbent  
Interfold ensures reduced consumption and waste  
Sheet Size: 240mm x 325mm  
20 packs of 100 per case (2000 sheets per case)

**CODE**  
TS-0337

**DESCRIPTION**  
Twinsaver M Fold 2000

**PACK SIZE**  
20 per Case



## 1PLY MINI CENTREFEED HAND TOWEL

**Green Choice**  
Super strong, super absorbent  
Unrestricted usage  
Roll Size: 210mm x 140m  
6 Rolls per case

**CODE**  
TS-0324

**DESCRIPTION**  
Twinsaver Centrefeed Mini 140

**PACK SIZE**  
6 per Case



## 1PLY CENTREFEED TOWEL

**Green Choice**  
Super strong, super absorbent  
Unrestricted usage  
Roll Size: 240mm x 360m  
4 Rolls per case

**CODE**  
TS-0325

**DESCRIPTION**  
Twinsaver Centrefeed Standard 360

**PACK SIZE**  
4 per Case

PRODUCT RANGE: TWINSAYER



## 1PLY HAND TOWEL

*Super strong, super absorbent  
Controlled sheet dispensing, reduces waste  
Cost effective  
6 Rolls per case  
Roll size: 200mm x 150mm*

**CODE**  
TS-0391

**DESCRIPTION**  
Twinsaver Control 1-Ply 150

**PACK SIZE**  
6 per Case



## 2PLY LUXURY TOILET PAPER

*Luxurious 2PLY toilet paper  
100% Virgin Fibre  
48 Rolls of 4's per case  
Sheet Size: 100mm x 110mm*

**CODE**  
TS-0124

**DESCRIPTION**  
Twinsaver Superior 2-Ply

**PACK SIZE**  
48 per Bale



## ECONO 1PLY TOILET PAPER

*Green Choice  
Cost effective  
48 rolls of 500 sheets per case  
Sheet size: 100mm x 110mm*

**CODE**  
TS-0171

**DESCRIPTION**  
Twinsaver Roll 1-Ply

**PACK SIZE**  
48 per Bale



## 1PLY TOILET PAPER

*Green Choice  
Soft, strong and great quality  
48 rolls of 500 sheets per case  
Sheet size: 100mm x 110mm  
SABS approved*

**CODE**  
TS-0174

**DESCRIPTION**  
Twinsaver Roll 1-Ply

**PACK SIZE**  
48 per Bale



## 1PLY TOILET PAPER JUMBO ROLL

*Green Choice  
Ideal for high traffic environment  
Strong great quality  
8 Rolls per case  
Roll Size: 95mm x 550m*

**CODE**  
TS-0624

**DESCRIPTION**  
Twinsaver Bigroll 5000 1-Ply

**PACK SIZE**  
8 per Bale



PRODUCT RANGE: TWINSAYER

## 1PLY PAPER WIPE



*Green Choice*  
*Multi-purpose wiping*  
*1 Roll per pack*  
*Roll size: 210mm X 1500m*

**CODE**  
TS-0474

**DESCRIPTION**  
Twinsaver Wipe

**PACK SIZE**  
1 per Pack

## 1PLY PAPER WIPE MINI



*Green Choice*  
*Multi-purpose wiping*  
*1 Roll per pack*  
*Roll size: 200mm X 750m*

**CODE**  
TS-0481

**DESCRIPTION**  
Twinsaver Wipe Mini

**PACK SIZE**  
1 per Pack

## 1PLY PAPER WIPE SLIM LINE



*Green Choice*  
*Multi-purpose wiping*  
*1 Roll per pack*  
*Roll size: 160mm X 1500m*

**CODE**  
TS-0482

**DESCRIPTION**  
Twinsaver Wipe Econo

**PACK SIZE**  
1 per pack

## 2PLY PAPER WIPE



*Super strong, super absorbent*  
*Multi-purpose wiping*  
*2 ply softness*  
*1 Roll per pack*  
*Roll size: 280mm X 1000m*

**CODE**  
TS-0480

**DESCRIPTION**  
Twinsaver Wipe

**PACK SIZE**  
1 per pack

## 2PLY WHITE BOX 90S



*Soft, strong and great quality*  
*FSC certified*  
*90 sheets of 2PLY luxury tissue*  
*40 packs per case*  
*Sheet size 205mm X 190mm*

**CODE**  
TS-2030

**DESCRIPTION**  
Twinsaver Facial 90 Box

**PACK SIZE**  
40 per Case

PRODUCT RANGE: TWINSAYER





## 2PLY HAND TOWEL

*2PLY softness*  
*Super strong, super absorbent*  
*Ideal for automated dispensers*  
*6 rolls per case*  
*Roll Size: 200mm x 125m*

**CODE**  
 TS-0978

**DESCRIPTION**  
 Twinsaver Control 2-Ply 125

**PACK SIZE**  
 6 per Case



## 2PLY LAMINATED HAND TOWELS

*Luxurious laminated soft towel*  
*Ideal for automated dispensers*  
*Controlled sheet dispensing, reduces waste*  
*6 Rolls per case*  
*Roll size: 200mm X 125m*

**CODE**  
 TS-3022

**DESCRIPTION**  
 Twinsaver Laminated 2-Ply 125m

**PACK SIZE**  
 6 per Case



## 2PLY ROLLER TOWEL

*Green Choice*  
*Super strong, super absorbent*  
*50 sheets per roll*  
*2 rolls per pack*  
*12 packs per case*  
*Sheet size: 260mm X 220mm*

**CODE**  
 TS-3012

**DESCRIPTION**  
 Twinsaver Kitchen Towel Standard

**PACK SIZE**  
 12 per Bale



## 2PLY MIGHTY BIG ROLLER TOWEL

*Super strong, super absorbent*  
*150 sheets per roll*  
*2 rolls per pack*  
*12 packs per case*  
*Sheet size: 260mm x 220mm*

**CODE**  
 TS-3020

**DESCRIPTION**  
 Twinsaver Mighty Big Roller Towel

**PACK SIZE**  
 12 per Bale



## 2PLY MEDICAL TOWEL

*Embossing for improved absorbency*  
*Superior 2PLY*  
*Each roll is perforated for ease of use*  
*254mm X 440m per sheet*  
*Pack size: 18 rolls per case*

**CODE**  
 TS-0383

**DESCRIPTION**  
 Twinsaver Medical 2-Ply 254

**PACK SIZE**  
 18 per Case



## 2PLY MEDICAL TOWEL

*Embossing for improved absorbency*  
*Superior 2PLY*  
*Each roll is perforated for ease of use*  
*508mm X 440m per sheet*  
*Pack size: 9 rolls per case*

**CODE**  
 TS-0384

**DESCRIPTION**  
 Twinsaver Medical 2-Ply 508

**PACK SIZE**  
 9 per Case



PRODUCT RANGE: TWINSAYER

## DISINFECTA WET WIPES 10'S



*Soft and gentle on skin  
Kills 99.9% of germs  
Antibacterial protection for the whole family  
32 packs of 10 per case  
Sheet size: 200mm x 170mm*

**CODE**  
TS-43034

**DESCRIPTION**  
TS Disinfecta Wipes 10's

**PACK SIZE**  
32 per Case

## DISINFECTA WET WIPES 40'S



*Soft and gentle on skin  
Kills 99.9% of germs  
Antibacterial protection for the whole family  
20 packs of 40 per case  
Sheet size: 200mm x 170mm*

**CODE**  
TS-43035

**DESCRIPTION**  
TS Disinfecta Wipes 40's

**PACK SIZE**  
20 per Case

## REFRESHA WET WIPES 10'S



*Soft and gentle on skin  
Alcohol Free  
Hypo-allergenic  
Dermatologically tested  
Contains soothing Aloe and Camomile  
32 packs of 10 per case  
Sheet size: 200mm x 170mm*

**CODE**  
TS-43044

**DESCRIPTION**  
TS Refresha Wipes 10's

**PACK SIZE**  
32 per case

## REFRESHA WET WIPES 40'S



*Soft and gentle on skin  
Alcohol Free  
Hypo-allergenic  
Dermatologically tested  
Contains soothing Aloe and Camomile  
20 packs of 40 per case  
Sheet size: 200mm x 170mm*

**CODE**  
TS-43046

**DESCRIPTION**  
TS Refresha Wipes 40's

**PACK SIZE**  
20 per case



## 2PLY SERVIETTES

*Bulk pack*  
*Strong and soft*  
*2PLY luxurious serviettes*  
*Sheet size 330mm X 330mm*  
*1000 sheets per case*

**CODE**  
TS-0425

**DESCRIPTION**  
Twinsaver Serviettes 2Ply

**PACK SIZE**  
1000 per case



## 1PLY SERVIETTES

*Green Choice*  
*Bulk pack*  
*Strong and soft*  
*Sheet size 290mm X 300mm*  
*1000 sheets per case*

**CODE**  
TS-0414

**DESCRIPTION**  
Twinsaver Serviettes 1Ply

**PACK SIZE**  
1000 per case



## 1PLY SERVIETTES ECONO

*Green Choice*  
*Bulk pack*  
*Strong and soft*  
*Sheet size 200mm X 290mm*  
*3000 sheets per case*

**CODE**  
TS-7257

**DESCRIPTION**  
Twinsaver Serviettes Econo

**PACK SIZE**  
3000 per case



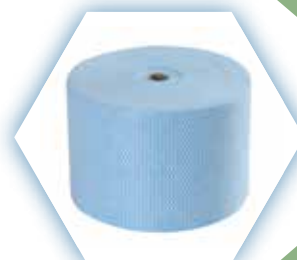
## BLUE ROLL NON-WOVEN WIPE

*Made from soft and highly absorbent spunlace*  
*Super strong, super absorbent*  
*Single or daily use wipes for frequent use*  
*Can be used wet or dry*  
*1 roll per pack*  
*Roll size 250mm X 400m*

**CODE**  
TS-0981

**DESCRIPTION**  
Twinsaver Cloth Roll Blue

**PACK SIZE**  
1 Roll



## NON-WOVEN WIPE SHEETS

*Made from soft and highly absorbent spunlace*  
*Super strong, super absorbent*  
*Single or daily use wipes for high risk and frequently contaminated areas*  
*Can be used wet or dry*  
*Available in 5 of the HACCP\* colours: Blue, White, Yellow, Green and Red*  
*50 wipes per pack and 5 packs per case*  
*Sheet size: 35cm x 40cm*

**CODE**  
TS-0937  
TS-0938  
TS-0939  
TS-0940  
TS-0941

**DESCRIPTION**  
TS White Sheet NWW  
TS Blue Sheet NWW  
TS Yellow Sheet NWW  
TS Green Sheet NWW  
TS Red Sheet NWW

**PACK SIZE**  
5 packs per case  
5 packs per case  
5 packs per case  
5 packs per case  
5 packs per case



PRODUCT RANGE: TWINSAYER



## FACIAL TISSUE CUBE VITAMIN E 3 PLY 60'S

*Extra soft, infused with soothing vitamin E*  
*FSC certified*  
*60 Tissues per box*  
*18 Units per case*

**CODE**  
TS-2042

**DESCRIPTION**  
TSaver FT VIT E 3P 18x60

**PACK SIZE**  
18 per Case



## FACIAL TISSUE CUBE CAMOMILE 3 PLY 60'S

*Extra soft, infused with camomile*  
*FSC certified*  
*60 Tissues per box*  
*18 Units per case*

**CODE**  
TS-2043

**DESCRIPTION**  
TSaver FT Camo 3P 18x60

**PACK SIZE**  
18 per Case



## FOAM HAND SOAP SACHET

*Biodegradable:*  
*Environmentally friendly product*  
*Cost effective*  
*6 x 600ml per case*

**CODE**  
TS-0617

**DESCRIPTION**  
Foam Hand Soap Sachet

**PACK SIZE**  
6 per Case



## ANTIBAC HAND FOAM SOAP

**G Cide 99.9% effective germ protection:**  
Environmentally friendly product: Anti-microbial, Anti-viral, Anti-fungal, disinfection with the power to kill germs.

**Eco Choice:**  
Environmentally friendly product, contains no harmful additives or components.

**Biodegradable**  
Dye Free  
6 x 600ml per case

**CODE**  
TS-0911

**DESCRIPTION**  
Antibac Hand Foam soap

**PACK SIZE**  
6 per Case



## WATERLESS FOAM HAND SANITISER

**G Cide 99.9% effective germ protection:**  
Environmentally friendly product: Anti-microbial, Anti-viral, Anti-fungal, disinfection with the power to kill germs.

**Eco Choice:**  
Environmentally friendly product, contains no harmful additives or components.

**Biodegradable**  
6 x 600ml per case

**CODE**  
TS-0912

**DESCRIPTION**  
Waterless Foam Hand Sanitiser

**PACK SIZE**  
6 per Case



## 2 PLY RAINBOW BOX 180'S

Soft, strong, great quality  
FSC certified  
180 Tissues per box  
40 Units per case  
Sheet size: 205mm x 190mm

**CODE**  
TS-2015

**DESCRIPTION**  
Twinsaver FT 40X 180 RB

**PACK SIZE**  
40 per Case



## 2 PLY WHITE BOX 180'S

Soft, strong, great quality  
FSC certified  
180 Tissues per box  
40 Units per case  
Sheet size: 205mm x 190mm

**CODE**  
TS-2016

**DESCRIPTION**  
Twinsaver FT 40X 180 W

**PACK SIZE**  
40 per Case



## DECORATIVE TUBE 2 PLY 80'S

Perfect for desk and car  
FSC certified  
80 Tissues per tube  
24 Units per case  
Sheet size: 164mm x 190mm

**CODE**  
TS-2040

**DESCRIPTION**  
T saver FT tube 2P 24x80

**PACK SIZE**  
24 per Case



## LADIES POCKET PACK 3 PLY

Ideal for handbags/school bag  
FSC certified  
10 Tissues per pocket pack  
24 x 8 Packs per case  
Sheet size: 210mm x 210mm

**CODE**  
TS-2045

**DESCRIPTION**  
TS Ladies Ppack 24x8x10

**PACK SIZE**  
24 x 8 packs per Case



## MENS POCKET PACK 3 PLY

Ideal fit for shirt/ jacket pocket  
FSC certified  
10 Tissues per pocket pack  
24 x 8 Packs per case  
Sheet size: 210mm x 210mm

**CODE**  
TS-2044

**DESCRIPTION**  
TS Men Ppack 24x8x10

**PACK SIZE**  
24 x 8 packs per Case



PRODUCT RANGE: TWINSAYER



## TWINSAYER MINI LEVER DISPENSER



*Ideal for small confined spaces  
Can be used as an elbow lever for hygiene  
Manual lever dispenser  
Economical and durable  
Lockable, eliminates theft  
Compatible with TS-0391, TS-0978 and TS-3010*

**CODE**  
TS-0920

**DESCRIPTION**  
Twinsaver Mini Lever White

**SIZE**  
318mm x 280mm x 225mm

## FOLDED TOWEL DISPENSER



*Compact & ideal for small confined spaces  
Low noise  
Elegant slim line design  
Economical and durable  
Lockable, eliminates theft  
Compatible with TS-0319, TS-0315 and TS-0337*

**CODE**  
TS-0914

**DESCRIPTION**  
Twinsaver Folded Towel  
(Large)

**SIZE**  
275mm x 375mm x 105mm

## MINI CENTREFEED DISPENSER



*Ideal for small spaces  
Low noise  
No working parts prevent down time and refilling  
Economical and durable  
Lockable, eliminates theft  
Compatible with TS-0324*

**CODE**  
TS-0527

**DESCRIPTION**  
Twinsaver Centrefeed Mini

**SIZE**  
166mm x 193mm x 185mm

## STANDARD CENTREFEED DISPENSER



*Large capacity, Ideal for high traffic areas  
Low noise  
No working parts prevent down time and refilling  
Economical and durable  
Lockable, eliminates theft  
Compatible with TS-0325, TS-0342 and TS-0343*

**CODE**  
TS-0526

**DESCRIPTION**  
Twinsaver Centrefeed  
Standard

**SIZE**  
265mm x 335mm x 275mm

## TOILET ROLL DISPENSER TR2 WHITE



*2 roll capacity, reduces refilling time  
Stylish finish  
Durable  
Lockable, eliminates theft  
Compatible with TS-1370, TS-0124, TS-0189, TS-0174 and TS-0171*

**CODE**  
TS-0571

**DESCRIPTION**  
Twinsaver Toilet Roll 2  
White

**SIZE**  
160mm x 290mm x 130mm



## PINK LIQUID HAND SOAP

**Biodegradeable:**  
Environmentally friendly product  
**Cost effective**  
4 x 5L per case

**CODE**  
TS-0677

**DESCRIPTION**  
Pink Liquid Hand Soap

**PACK SIZE**  
4 per Case



## ALCOHOL LIQUID HAND SANITISER CARTRIDGE

**G Cide 99.9% effective germ protection:**  
Environmentally friendly product: Anti-microbial, Anti-viral, Anti-fungal, disinfection with the power to kill germs.  
**Eco Choice:**  
Environmentally friendly product, contains no harmful additives or components.  
**Biodegradable**  
6 x 1L per case

**CODE**  
TS-0626

**DESCRIPTION**  
TS Alcohol Liquid Hand Sanitiser Cartridge

**PACK SIZE**  
6 per case



## SOFT FOAM SOAP CARTRIDGE

**CODE**  
TS-0614

**DESCRIPTION**  
TS Soft Foam Soap Cartridge

**PACK SIZE**  
6 per case



## ANTI-BAC FOAM HAND SOAP CARTRIDGE

**CODE**  
TS-0619

**DESCRIPTION**  
TS Anti-bac foam hand soap cartridge

**PACK SIZE**  
6 per case



PRODUCT RANGE: TWINSaver

## FOLDED HAND TOWEL DISPENSER



*Slim style, ideal for small confined spaces  
Low noise  
Stylish and durable  
Convenient viewing window to see towel levels  
Lockable, eliminates theft  
Compatible with TS-0337, TS-0319 and TS-0315*

CODE	DESCRIPTION	SIZE
TS-0432	Folded hand towel dispenser White	410mm x 141mm x 320mm
TS-0433	Folded hand towel dispenser Silver	410mm x 141mm x 320mm

## FOLDED HAND TOWEL DISPENSER SILVER SATIN



*Ideal for small confined spaces  
Stylish stainless steel satin finish  
Convenient viewing window to see towel levels  
Durable  
Lockable, eliminates theft  
Compatible with TS-0319, TS-0315 and TS-0337*

CODE	DESCRIPTION	SIZE
TS-0435	Twinsaver Folded Towel Silver Satin Finish	325mm x 120mm x 255mm

## FOAM SOAP DISPENSER



*Up to 300 washes per pouch  
Convenient viewing window to see soap levels  
Economical and durable  
Lockable, eliminates theft  
Capacity: 600ml pouch  
Compatible with TS-0617, TS-0911 and TS-0912*

CODE	DESCRIPTION	SIZE
TS-0530	Twinsaver Foam Soap (600ml)	118mm x 270mm x 120mm

## ELBOW LEVER SOAP DISPENSER



*Elbow lever system for hygiene-up to 600 washes  
Convenient viewing window to see soap levels  
Economical and durable  
Lockable, eliminates theft  
Capacity: 1000ml cartridge  
Compatible with TS-0614, TS-0619 and TS-0626*

CODE	DESCRIPTION	SIZE
TS-0757	Elbow Lever Soap Dispenser	300mm x 200mm x 100mm

## AUTOMATIC SOAP DISPENSER



*Sensor operated-hygienic no touch  
Up to 300 washes per pouch  
Convenient viewing window to see soap levels  
Economical and durable  
Lockable, eliminates theft  
Capacity: 600ml pouch  
Compatible with TS-0617, TS-0911 and TS-0912*

CODE	DESCRIPTION	SIZE
TS-0570	Twinsaver Auto Soap	100mm x 250mm x 120mm

## TOILET ROLL DISPENSER TR3

3 roll capacity, reduces refilling time

Stylish finish

Durable

Lockable, eliminates theft

Compatible with TS-1370, TS-0124, TS-0189, TS-0174 and TS-0171

CODE	DESCRIPTION	SIZE
TS-0573	Twinsaver Toilet Roll 2 White	160mm x 390mm x 130mm
TS-0678	Twinsaver Toilet Roll 3 Silver	160mm x 390mm x 130mm



## BIG TOILET TISSUE DISPENSER

Ideal for High Traffic areas, reducing janitorial time

Large roll capacity

Viewing window to allow checking of roll level

Stylish and durable

Lockable, eliminates theft

Compatible with TS-0624

CODE	DESCRIPTION	SIZE
TS-0637	Big Toilet Tissue Dispenser White	296mm x 135mm x 277mm
TS-0638	Big Toilet Tissue Dispenser Silver	294mm x 135mm x 277mm



## AUTO-CUT HAND TOWEL DISPENSER

Auto control sheet dispensing - eliminates

risk of cross contamination

Low noise

Stylish and durable

Convenient viewing window to see roll level

Lockable, eliminates theft

Compatible with TS-3010, TS-3022, TS-0978 and TS-0391

CODE	DESCRIPTION	SIZE
TS-0936	Auto-cut Hand Towel Dispenser White	371mm x 221mm x 330mm
TS-0904	Auto-cut HAnd Towel Dispenser Silver	371mm x 221mm x 330mm



## ELECTRONIC HAND TOWEL DISPENSER

Custom length of paper sheet to suit your environment

Can dispense between 20cm to 36cm in 2 to 4 seconds

Stylish and durable

Convenient viewing window to see roll level

Lockable, eliminates theft

Compatible with TS-3010, TS-3022, TS-0978 and TS-0391

CODE	DESCRIPTION	SIZE
TS-0903	Electronic Hand Towel Dispenser White	371mm x 221mm x 330mm
TS-0905	Electronic HAnd Towel Dispenser Silver	371mm x 221mm x 330mm



## MANUAL SOAP DISPENSER



*High capacity - Up to 500 washes  
Convenient viewing window to see soap levels  
Stylish and durable  
Lockable, eliminates theft  
Capacity: 1000ml  
Compatible with TS-0608, TS-0609, TS-0610 and TS-0611*

CODE	DESCRIPTION	SIZE
TS-0758	Twinsaver Manual Soap Disp	232mm x 114mm x 124mm
TS-0901	White Twinsaver Manual Soap Disp Silver	232mm x 114mm x 124mm

## AUTOMATED SOAP DISPENSER



*Ideal for High Traffic areas- Up to 600 washes  
Electronic foam dispenser - hygienic, no-touch  
Convenient viewing window to see soap levels  
Economical and durable  
Lockable, eliminates theft  
Capacity: 1000ml cartridge  
Compatible with TS-0613*

CODE	DESCRIPTION	SIZE
TS-0759	Automated Soap Dispenser(foam)	270mm x 110mm x 140mm

## MANUAL FOAM DISPENSER SILVER SATIN



*High capacity - Up to 500 washes  
Stylish stainless steel satin finish  
Convenient viewing window to see soap levels  
Durable  
Lockable, eliminates theft  
Capacity: 1000ml  
Compatible with TS-0608, TS-0609, TS-0610 and TS-0611*

CODE	DESCRIPTION	SIZE
TS-0902	Manual Soap Dispenser Silver Satin	290mm x 137mm 110ml

## 23L WALL BIN WITH LID



*Ideal for small confined spaces  
Safe disposal system with lid for hygiene  
Economical and durable  
Bin size: 490mm x 330mm x 220mm  
Lid Size: 90mm x 335mm x 225mm  
Capacity: 23lt*

CODE	DESCRIPTION	COLOUR
TS-0935	23L Wall Bin with Lid	White
TS-0438	23L Wall Bin with Lid	Silver



## WIPE STAND

*Large wipe Capacity, ideal for high traffic areas*

*Economical and durable*

*Serrated teeth cut paper easily*

*Ideal for paper wipes and cloths*

*Size: 1210mm x 525mm*

*Compatible with TS-0471, TS-0474, TS-0477, TS-0480, TS-0482 and TS-0981*

**CODE**

TS-0488

**DESCRIPTION**

Twinsaver Wipe Stand



## PLASTIC WALL STAND

*Ideal for small confined spaces*

*Economical and durable*

*Mount in kitchen and workshop area*

*Ideal for paper wipes and cloths*

*Size: 250mm x 440mm x 305mm*

*Compatible with TS-3016, TS-3020, TS-0481 and TS-0981*

**CODE**

TS-0654

**DESCRIPTION**

Twinsaver Plastic Wall Stand



## HD CHEMICAL RANGE

We take great pride in our specially manufactured cleaning chemicals that assists in all areas of the home, commercial companies, food processing plants and the like. Our chemical range is manufactured to SABS standards and we can provide all certification if requested

### HD 2C SURFACE DISINFECTANT - CLEAR



Used as an all purpose disinfectant and cleaner in food sensitive areas including food processing equipment, ovens, restaurants, food transport vehicles, floors in food store warehouses etc. \*Also available in Blue

CODE	SIZE	PACK SIZE
HD 2C /1	1L	6 x 1L *Minimum order for 1L is a case of 6 x 1L
HD 2C /5	5L	4 x 5L
HD 2C /25	25L	1 x 25L

**DILUTION:** General Disinfection 10ml : 1L water \*Contact time of 5 minutes  
Heavy Duty Disinfection 20ml : 1L water \*Contact time of 5 minutes

### HD 4 THICK BLEACH



Concentrated, chlorine bleach with additional cleaning surfactants.

CODE	SIZE	PACK SIZE
HD 4 /1	1L	6 x 1L
HD 4 /5	5L	*Minimum order for 1L is a case of 6 x 1L 4 x 5L

**DILUTION:** Use as is.

### HD 5 CHLORINE DISINFECTANT



Used as an all-purpose bleaching agent for white fabric. Chlorine ensure that this product has cleaning and biocidal properties. Can be used in toilets, urinals, wash basins and dustbins etc.

CODE	SIZE	PACK SIZE
HD 5 /5	5L	4 x 5L

**DILUTION:** For disinfecting use as is for maximum kill ratio \*Contact time > 2 minutes  
Dilute with water to suit application

### HD 6 PERFUMED HAND SOAP



HD 6 is water based, fragranced, synthetic hand-soap & skin cleanser. Used as an all-purpose liquid hand soap.

CODE	SIZE	PACK SIZE
HD 6 /5	5L	4 x 5L
HD 6 /25	25L	1 x 25L

**DILUTION:** Use as is with a dispenser

### HD 7 HYGIENE HAND SOAP



Water based synthetic hygiene (anti-bacterial) hand soap, skin cleaner with biocide, used within the food industry for daily hygienic cleaning of hands and arms.  
\*No fragrance.

CODE	SIZE	PACK SIZE
HD 7 /5	5L	4 x 5L
HD 7 /25	25L	1 x 25L

**DILUTION:** Use as is with a dispenser

PRODUCT RANGE: HD CHEMICALS

## HD CHEMICAL RANGE

### HD 8 MULTI SURFACE DISINFECTANT : 40% ALCOHOL BASED SANITISER

HD 8 is an alcohol based, waterless, liquid type sanitiser with biocide used within the food and general industry for microbial control (Hand, Surface & Seat Sanitiser)

CODE	SIZE	PACK SIZE
HD 8/5	5L	4 x 5L
HD 8G/5	5L	4 x 5L

DILUTION: Light Duty = 20ml : 1L water  
Heavy Duty = Undiluted

Medium Duty = 100ml : 1L water



### HD 9 PINE GEL

Used as an all purpose biocidal cleaner, in mainly washroom and toilet facilities. Can be used for most general cleaning applications. Contains pleasant pine oil and surfactants for effective cleaning. QAC additive provides biocidal properties

CODE	SIZE	PACK SIZE
HD 9/5	5kg	4 x 5kg bucket

DILUTION: Light Duty = 20ml : 1L water  
Heavy Duty = Undiluted

Medium Duty = 100ml : 1L water



### HD 10 HARD SURFACE CLEANER + DEGREASER

Used as an all-purpose degreaser and cleaner of all hard surface's including walls, floors, engine's, upholstery, carpets and all ferrous and non-ferrous metals. All food & beverage cleaning requirements. May be used for daily general cleaning applications and is considered safe for use on most common surfaces.

CODE	SIZE	PACK SIZE	
HD 10 /1	1L	6 x 1L	*Minimum order for 1L is a case of 6 x 1L
HD 10 /5	5L	4 x 5L	
HD 10 /25	25L	1 x 25L	

DILUTION: General / Light Cleaning  
Medium Cleaning 40ml : 1L water

20ml : 1L water \*Dilute with hot / cold water  
Heavy Duty Cleaning 200ml : 1L water



### HD 11 CRATE WASH

Used for daily crate and bottle washing applications via enclosed systems or general manual or automated systems. May be used for general CIP applications.

CODE	SIZE	PACK SIZE
HD 11 /5	5L	4 x 5L
HD 11 /25	25L	1 x 25L

DILUTION: 5ml : 1L water



### HD 12HF/NF DESCALER & CLEANER (FOAMING & NON-FOAMING)

Used primarily as a gel type detergent on plant and general manufacturing equipment to remove harsh water scale and hard water mineral deposits. Will effectively descale and emulsify soiling, grease and grime. Safe on most types of metals. Caution should be taken when used neat on aluminium. Can be diluted in water to make up an effective acidic floor degreaser and acid edge.

CODE	SIZE	PACK SIZE
HD 12HF /5	5L	4 x 5L
HD 12HF /25	25L	1 x 25L
HD 12NF /5	5L	4 x 5L
HD 12NF /25	25L	1 x 25L

DILUTION: Use undiluted.



## HD 13 FLOORKLENE POWDERED



Used as an all-purpose hard surface floor degreaser and scrub to remove a range of general grease and grime, including tenacious proteins, oils, fats and general soiling. May be used for forecourt and service station floors.

CODE	SIZE	PACK SIZE
HD 13 /5	5L	4 x 5L
HD 13 /25	25L	1 x 25L

**DILUTION:** Dilute in water 0.5%-5% and apply to floor

## HD 18 DISH WASHING DETERGENT FOOD GRADE



Used as an all-purpose, high-foaming neutral cleaner for washing of dishes, floors, walls, glass tops, windows and all other general and light duty type cleaning applications.

CODE	SIZE	PACK SIZE
HD 18 /1	1L	6 x 1L
HD 18 /5	5L	*Minimum order for 1L is a case of 6 x 1L
HD 18 /25	25L	4 x 5L
		1 x 25L

## HD 19 DISH WASHING DETERGENT - CONCENTRATE



Used as an all-purpose, high-foaming neutral cleaner for washing of dishes, floors, walls, glass tops, windows and all other general and light duty type cleaning applications.

CODE	SIZE	PACK SIZE
HD 19 /1	1L	6 x 1L
HD 19 /5	5L	*Minimum order for 1L is a case of 6 x 1L
HD 19 /25	25L	4 x 5L
		1 x 25L

## HD 20 DISHWASH HEAVY DUTY (FG) X-300



Used as an all-purpose degreaser in food sensitive area, food processing equipment ovens, restaurants, food transport vehicles, floors in food store warehouse etc.

CODE	SIZE	PACK SIZE
HD 20 /1	1L	6 x 1L
HD 20 /5	5L	*Minimum order for 1L is a case of 6 x 1L
HD 20 /25	25L	4 x 5L
		1 x 25L

## HD 200R OVEN AND GRILL ALKALINE DEGREASER - CAUSTIC BASED HEAVY DUTY



Used as an all-purpose degreaser in food sensitive area, food processing equipment ovens, restaurants, food transport vehicles, floors in food store warehouse etc.

CODE	SIZE	PACK SIZE
HD 200 /1	1L	6 x 1L
HD 200 /5	5L	*Minimum order for 1L is a case of 6 x 1L
HD 200 /25	25L	4 x 5L
		1 x 25L

**DILUTION:** General / Light Cleaning 20ml : 1L water  
Medium Cleaning 40ml : 1L water  
Heavy Duty Cleaning 200ml : 1L water

## HD CHEMICAL RANGE

### HD 21 AUTO DISH WASHER - RINSE AID

Used as a non-foaming streak free rinsing agent for automatic dish washers, in the rinsing cycle. Will ensure rapid streak free rinsing and neutralizing of the automatic dish washing liquid, enhancing the drying cycle.

**CODE**  
HD 21 /25

**SIZE**  
25L

**PACK SIZE**  
1 x 25L



**DILUTION:** Automatic Dish Washing 20ml : 1L water  
0.1 - 0.5% v/water. Set dosing equipment according to requirement

### HD 22 AUTO DISH WASHER - DETERGENT

Used as a low foaming alkaline cleaner for washing of dishes via automatic dish washing machines / equipment. Will effectively soften the water in the cleaning cycle to ensure effective cleaning and soil removal. Effective on most types of fats, oils and grease.

**CODE**  
HD 22 /25

**SIZE**  
25L

**PACK SIZE**  
1 x 25L



**DILUTION:** Automatic Dish Washing 20ml : 1L water  
0.1 - 0.5% v/water. Set dosing equipment according to requirement

### HD 23 HEAVY DUTY DRAIN CLEANER - POWDER

Primarily used for the un-clogging of most interior and exterior drains. May be used for interior drains including industrial applications, kitchens, abattoirs, food processing & change houses. Caution should be taken to avoid contact with aluminium, zinc, painted surfaces and galvanized parts.

**CODE**  
HD 23 /1

**SIZE**  
1kg

**PACK SIZE**  
6 x 1kg \*Minimum order for 1kg is a case of 6 x 1kg

HD 23 /5

5kg

4 x 5kg

**DILUTION:** Use as is. 500g followed by 2-5L water. Repeat if necessary



### HD 27 TOILET DESCALER

Used effectively as a descaler for most porcelain toilets. HD27 removes all brown stain residues in toilets. Can also be used as an acidic brick cleaner.

**CODE**  
HD 27 /5

**SIZE**  
5L

**PACK SIZE**  
4 x 5L

**DILUTION:** Toilets = Undiluted  
Floors / Bricks = Undiluted



### HD 30 MULTI-SURFACE DISINFECTANT

Neutral, all purpose, general purpose, low-foaming, quick-drying, fresh juicy lemon fragrance. Machine safe, scrubber, extraction and glass / mirror cleaner.

**CODE**  
HD 30 /1  
HD 30 /5

**SIZE**  
1L  
5L

**PACK SIZE**  
6 x 1L \*Minimum order for 1L is a case of 6 x 1L  
4 x 5L



**DILUTION:** General / Light Cleaning 20ml : 1L water  
Medium Cleaning 40ml : 1L water  
Heavy Duty Cleaning 200ml : 1L water



## HD 31 WINDOW CLEANER



Used as an all purpose low foaming streak free window and glass cleaner. Water soluble cleaner, cleaning surfactants, emulsifiers, alcohol and water soluble cleaning solvents.

CODE	SIZE	PACK SIZE
HD 31 /1	1L	6 x 1L
HD 31 /5	5L	4 x 5L

DILUTION: Light Duty Cleaning = 200ml : 1L water  
Medium Duty = 333ml : 1L water Heavy Duty = Undiluted

## HD 37 AMMONIATED ALL PURPOSE CLEANER



Used as an all purpose ammoniated cleaner for all types of hard surface including: floors, walls, tiles, basins, kitchens and general surfaces

CODE	SIZE	PACK SIZE
HD 37 /1	1L	6 x 1L
HD 37 /5	5L	4 x 5L

DILUTION: Light Duty Cleaning = 40ml : 1L water  
Medium Duty = 100ml : 1L water Heavy Duty = Undiluted

## HD 50 MORTAR REMOVER



Used effectively as a cement residue cleaner. Also used as a brick cleaner. Water soluble cleaner, hydrochloric acid, cleaning surfactants, natural cleaning derivatives, and water soluble cleaning solvents. Effectively degreases and removes heavy soil from paving. Can also be used as a deruster and toilet bowl cleaner. Also used as an acid edge prior to epoxy or painting of cement floors

CODE	SIZE	PACK SIZE
HD 50 /5	5L	4 x 5L
HD 50 /25	25L	1 x 25L

DILUTION: Light Duty = 50ml : 1L water  
Medium Duty = 100ml : 1L water  
Heavy Duty = 200ml : 1L water

## HD300 ALCOHOL HAND SANITISER (70%)



Water soluble, contains aqua, iso-propyl alcohol, glycerol, preservative, fragrance & colorant. Manufactured free from methanol, hexane, acetone, ethyl acetate, methyl ethyl ketone & other impurities including non-distilled ethanol

CODE	SIZE	PACK SIZE
HD 300/1	1L	6 x 1L Bottles
HD 300/5	5L	4 x 5L Bottles
HD 300/5-GEL	5L	4 x 5L Bottles

## HD 105 HYGIENE DESCALER & CLEANER (HEAVY DUTY)



Heavy duty, water based, concentrated, acidic, fragranced, descaling & degreasing solution for washrooms and general hygiene. Change room deep cleaning applications including sanitary & toilet bowl cleaning. Free rinsing. Perfect for professional cleaning & hygiene companies. Fast & effective.

CODE	SIZE	PACK SIZE
HD 105 /5	5L	4 x 5L
HD 105 /25	25L	1 x 25L

DILUTION: Light Duty = 20ml : 1L water  
Medium Duty = 67ml : 1L water  
Heavy Duty = 200ml : 1L water

## AUTO CARE - VEHICLE CHEMICAL RANGE

**HD 38**

### AUTO DASH CREAM

Used a multifunctional silicone for enhancing and protection against harmful UV ray. Non oily and antistatic can effectively be used on all interior applications including rubber leather, vinyl, plastic and on all types of dashboards.

CODE	SIZE	PACK SIZE
HD 38 /5	5L	4 x 5L



### HD 41 AUTO FOAM DETERGENT

Used as an all purpose hi – foaming neutral cleaner for washing of cars, floors, glass tops. Windows and all other general and light duty type cleaning applications. Water soluble cleaner, contains water softeners, cleaning surfactants, DBSA and emulsifiers.

CODE	SIZE	PACK SIZE
HD 41 /5	5L	4 x 5L
HD 41 /25	25L	1 x 25L



### HD 106 SUPERIOR CAR WASH AND WAX

Detergent Hi-foaming car shampoo with wax additive

CODE	SIZE	PACK SIZE
HD 106/5	5L	4 x 5L
HD 106/25	25L	1 x 25L



### HD 45 TARR GONE

Used as an all purpose tarr & spot remover. Can also be used as degreaser. Safe to use on all types of paintwork, ferrous and non ferrous metals. Also effectively removes bitumen, heavy duty traffic film and insect residue on bumpers, headlights and bonnets

CODE	SIZE	PACK SIZE
HD 45 /5	5L	4 x 5L
HD 45 /25	25L	1 x 25L



## ULTRASAN 15% CHLORINE 15G SACHETS



*Detergent Sachets with chlorine for wash down and effective disinfection on floors, work surfaces, ablutions, kitchens etc.*

CODE	SIZE	PACK SIZE
ULT1515	15g	500 pieces per case
*Sold as a case		

<b>DILUTION:</b>	<b>Light Duty</b>	= 50ml : 1L water
	<b>Medium Duty</b>	= 100ml : 1L water
	<b>Heavy Duty</b>	= 200ml : 1L water

## ULTRASAN 15% CHLORINE BUCKET



*Detergent Buckets with 15% available chlorine for large volume industrial type wash down and effective disinfection especially for tough or high bacteria loads on floors, work surfaces, ablutions, kitchens etc.*

CODE	SIZE	PACK SIZE
ULT15	4 kg	4 x 4kg bucket

## FRESHWAY - FRESH FOOD DISINFECTANT



*Fresh Food Disinfectant. Disinfects meat, fish & fresh produce. Also effective for food-contact surfaces.*

CODE	SIZE	DOSAGE
FRESH	200g bottle	40 doses

<b>DILUTION:</b>	<b>Light Duty</b>	= 20ml : 1L water
	<b>Medium Duty</b>	= 67ml : 1L water
	<b>Heavy Duty</b>	= 200ml : 1L water

## KLORMAN

*KLORMAN Systems have led the way in point-of-use disinfection of potable & waste-water, fresh produce, meat, fish, poultry, kitchens and animal pens.*

*Robust, reliable, effective and affordable, the newly patented KM COMPACT series represents the simplest, safest and most cost-effective way to bring microbial control under control.*

1.



2.



3.



#	CODE	DESCRIPTION	PACK SIZE
1.	KLO 002	KLORMAN INLINE UNIT	1 Unit
2.	KLO 001	KLORMAN REPLACEMENT CARTRIDGES	16 cartridges / box
3.	KLO 006	KLORMAN HAND HELD UNIT	1 Unit

# TEST KITS

## CHLORINE TEST KIT

10ppm to 200ppm

**CODE**  
CTK 001

**SIZE**  
200 strips

**PACK SIZE**  
1 Bottle



## 3M OIL TEST KIT + WALL CHART

**CODE**  
HD OILK

**SIZE**  
40 Strips

**PACK SIZE**  
1 Bottle

HD OILC

A4 WALL CHART



## CHEMICAL TEST KIT FOR HD 2 SURFACE DISINFECTANT

### HD 2 Test Kit contains :

2 x Disinfectant Titrant Solution  
1 x Disinfectant Indicator Solution  
1 x Disinfectant Acidifier Solution  
1 x Plastic 10ml Test Tube  
1 x Blue Carry Case

### HD 2 Test Kit Refill contains:

2 x Disinfectant Titrant Solution  
1 x Disinfectant Indicator Solution  
1 x Disinfectant Acidifier Solution

**CODE**  
TEST 2  
TEST 2R  
TEST KIT TUBE

**DESCRIPTION**  
COMPLETE TEST KIT with PLASTIC TUBE  
REFILL FOR HD 2 TEST KIT  
PLASTIC TEST TUBE - 10ml



## CHEMICAL TEST KIT FOR HD 10 HARD SURFACE DEGREASER

### HD 10 Test Kit contains :

3 x Degreaser Titrant Solution  
1 x Degreaser Indicator Solution  
1 x Plastic 10ml Test Tube  
1 x Blue Carry Case

### HD 10 Test Kit Refill contains:

3 x Degreaser Titrant Solution  
1 x Degreaser Indicator Solution

**CODE**  
TEST 10  
TEST 10R  
TEST KIT TUBE

**DESCRIPTION**  
COMPLETE TEST KIT with PLASTIC TUBE  
REFILL FOR HD 10 TEST KIT  
PLASTIC TEST TUBE - 10ml



## CHEMICAL TEST KIT FOR HD 200 OVEN & GRILL ALKALINE DEGREASER

### HD 200 Test Kit contains :

3 x Degreaser Titrant Solution  
1 x Degreaser Indicator Solution  
1 x Plastic 10ml Test Tube  
1 x Blue Carry Case

### HD 200 Test Kit Refill contains:

3 x Degreaser Titrant Solution  
1 x Degreaser Indicator Solution

**CODE**  
TEST 200  
TEST 200R  
TEST KIT TUBE

**DESCRIPTION**  
COMPLETE TEST KIT with PLASTIC TUBE  
REFILL FOR HD 200 TEST KIT  
PLASTIC TEST TUBE - 10ml



PRODUCT RANGE: HD CHEMICALS



## P-ISLAND DOME + BIO DISC 80G - READY TO USE

*Bio-Enzyme Degradation of organic waste and deoderiser for urinals  
Double strength fragranced bio-enzyme urinal cleaner and odour elimantor in aesthetic pleasing dome.*



**CODE**  
PDISK

**DESCRIPTION**  
Dome + Disc

**SIZE**  
80g Disc

**PACK SIZE**  
10

**Recommended Usage:**  
1 per urinal up to 30 days



## P-URI-POD URINAL ANTI-SPLASH BACK BIO DEVICE - READY TO USE

*Detergent Buckets with 15% available chlorine for large volume industrial type wash down  
and effective disinfection especially for tough or high bacteria loads on floors, work  
surfaces, ablutions, kitchens etc.*



**CODE**  
P-URI-POD

**SIZE**  
4 kg

**PACK SIZE**  
4 x 4kg bucket



## P-ISLAND RIM BLOCK TOILET DEODERISER - 40GM BIO CUBE - READY TO USE

*Bio-Enzyme degradation of organic waste and deoderiser for urinals and toilet bowls  
Fragranced bio-enzyme toilet bowl cleaner and odour eliminator.*



**CODE**  
P-RIM

**DESCRIPTION**  
Bio Cube

**SIZE**  
40gm

**PACK SIZE**  
10

**Recommended Usage:**  
1 per toilet up to 30 days





## AIR CARE

### ANTI-BACTERIAL AIR SANITIZER

CODE	FRAGRANCE	SIZE	CASE SIZE
HD-AIR1 /AR	ARIELE	1 x 400ml Aerosol	12 Cans
HD-AIR1 /BAB	BABETTE	1 x 400ml Aerosol	12 Cans
HD-AIR1 /B	BALI	1 x 400ml Aerosol	12 Cans



### ANTI-BACTERIAL AIR SANITIZER

CODE	FRAGRANCE	SIZE
MB3000F	COCTAIL	1 x 75ml Aerosol
MB3000F03	TRANQUIL SENSE	1 x 75ml Aerosol



### MICROBURST 3000 AUTOMATIC AIR FRESHNER

CODE	DESCRIPTION	SIZE	CASE SIZE
MBDISP (1818144)	Microburst 3000 Dispenser	75 - 100ml	6 units



## FURNITURE & STAINLESS STEEL POLISH

### FURNITURE POLISH - AEROSOL



**CODE**  
HD-AIRF1 /LEM  
HD-AIRF1 /LAV

**FRAGRANCE**  
LEMON  
LAVENDER

**SIZE**  
1 x 400ml  
1 x 400ml

**CASE SIZE**  
12 Cans  
12 Cans

### STAINLESS STEEL POLISH - AEROSOL



**CODE**  
HDAIR/STEELO1

**SIZE**  
1 x 400ml

**CASE SIZE**  
12 Cans

### 3M® STAINLESS STEEL CLEANER + POLISHER



**CODE**  
3MSSC1

**DESCRIPTION**  
650g Aerosol

**PACK SIZE**  
Each

### 3M® SCOURING PAD - GREEN



**CODE**  
3M 001

**DIMENSION**  
260mm x 102mm

**PACK SIZE**  
10 pieces

PRODUCT RANGE: HD CHEMICALS

# GREEN WORX SOLUTIONS

South Africa's leading developer and manufacturer of green cleaning products that are kind to people and the environment.



## HAND WASH STATION SOLUTIONS

### BIO TECH GTX HAND SOAP - LIQUID

Bio Tech GTX Hand Soap is a creamy Bio Enzyme skin cleanser creating a healthy and stable microflora on the hands and other skin areas.

CODE	DESCRIPTION	SIZE	PACK SIZE
HD 110 /5	READY TO USE	5L	4 x 5L
HD 110 /25	READY TO USE	25L	1 x 25L



### BIO TECH GTX HAND SOAP - FOAM

Bio Tech GTX Hand Soap is a foam Bio Enzyme skin cleanser creating a healthy and stable microflora on the hands and other skin areas.

CODE	DESCRIPTION	SIZE	PACK SIZE
HD 110F /5	READY TO USE	5L	4 x 5L
HD 110 /25	READY TO USE	25L	1 x 25L



## LAUNDRY SOLUTIONS

### ODORITE ULTRA BIO-ENZYME LAUNDRY LIQUID\_CONCENTRATE

- 6 x Enzyme
- Low Temperature
- Liquid Laundry Detergent

CODE	DESCRIPTION	SIZE	PACK SIZE
HD 100 /5	Concentrate	5L	4 x 5L
HD 100 /25	Concentrate	25L	1 x 25L



### ODORITE ULTRA BIO-ENZYME LAUNDRY POWDER\_CONCENTRATE

- 6 x Enzyme • Low Temperature • Powder Laundry Detergent
- Odorite Ultra Plus Laundry Powder is a new granulated multi-enzyme laundry detergent solution.
- \*Allowing high wash performances at low temperatures. Odorite Ultra Plus Laundry Powder contains a blend of six different enzymes - Each enzyme offering primary stain removal and/or secondary wash effects such as:
- \* whiteness/anti-redeposition \* colour care \* fabric care. \* The six different enzymes work together, exhibiting extra power when removing complex stains.

CODE	DESCRIPTION	SIZE	PACK SIZE
HD 102 /5	3% Professional Concentrate	5kg bucket	4 x 5kg
HD 102 /25	3% Professional Concentrate	25kg bag	1 x 25kg



PRODUCT RANGE: GREEN WORX

### BIO TECH GTX 10 FF\_CONCENTRATE + READY TO USE



*Bio-Enzyme Multi Purpose Cleaner + Odour Digestor. 6 x Enzymes + 7 x Bio.*

*Bio Tech GTX 10 microbial consortium demonstrates superior enzyme performance for use in multiple applications. Bio Tech GTX 10 exhibits a broad range of degradation capabilities needed for a multi-purpose product efficacious in maintenance of drain line and grease traps, improving septic and waste degradation and cleaning and odour control making this product technologically the most advanced on the South African market.*

CODE	DESCRIPTION	SIZE	PACK SIZE
HD 86 /5	10 FF - Concentrate	5L	4 x 5L
HD 86 /25	10 FF - Concentrate	25L	1 x 25L
HD 76 /5	READY TO USE	5L	4 x 5L
HD 76 /25	READY TO USE	25L	1 x 25L

### ODORITE ULTRA GREASE TRAP 10 X FF\_CONCENTRATE



*Fats, Oils and Grease Formulation for Grease Traps*

*Odorite Ultra Grease Trap Conc. 10X FF microbial consortium demonstrates superior enzyme performance for use in grease trap and drain line applications. This microbial blend includes unique strains for a more complete degradation of organic waste found in grease traps and in drain lines*

CODE	SIZE	PACK SIZE
HD 77 /5	5L	4 x 5L
HD 77 /25	25L	1 x 25L

*Recommended Dilution Rate: 1 : 9 Ready to Use*

### ENZYME DISH WASHING LIQUID

### ODORITE ULTRA DISH WASHING LIQUID 4 X ENZYME\_ CONCENTRATE



*4 x Enzyme Liquid Dish Washing Detergent*

*Odorite Ultra dishwashing liquid is a fully formulated concentrate that is arguably the most technologically advanced in Africa designed for both FMCG retail, as well as for commercial / industrial use.*

CODE	SIZE	PACK SIZE
HD 79 /5	5L	4 x 5L
HD 79 /25	25L	1 x 25L

*Recommended Dilution Rate: 2.5ml - 5ml per 10L water*

### SURGICAL INSTRUMENT CLEANER

### ODORITE SURGICAL INSTRUMENT PRE-CLEAN\_ CONCENTRATE



*Odorite Surgical Instrument Pre-Cleaner is a pre-treatment cleaning agent for use in recovering all reusable immersible (surgical/medical) instruments prior to disinfection. The multi enzyme action provides rapid results when used in:*

- \*soaking trays*
- \*ultrasonic baths or scope washing units*

CODE	DESCRIPTION	SIZE	PACK SIZE
HD 104 /5	Concentrate	5L	4 x 5L
HD 104 /25	Concentrate	25L	1 x 25L

**NOTE: ON ORDER ONLY WITH 5+ DAYS ETA**

# GREEN WORX SOLUTIONS

## TOILET AND URINAL SOLUTIONS

### ODORITE BIO-ENZYME DRAIN PURGE 10 X FF\_CONCENTRATE + READY TO USE

#### Bio-Enzyme Drain Cleaner and Deodoriser

Ultra Drain Purge Conc. microbial consortium demonstrates superior enzyme performance for use in multiple applications. Ultra Drain Purge Conc. exhibits a broad range of degradation capabilities needed for a multi-purpose product efficacious in maintenance of drain line and grease traps, improving septic and waste degradation and cleaning and odour control.

CODE	DESCRIPTION	SIZE	PACK SIZE
HD 74 /5	10 X FF - Concentrate	5L	4 x 5L
HD 74 /25	10 X FF - Concentrate	25L	1 x 25L
HD 84 /5	READY TO USE	5L	4 x 5L
HD 84 /25	READY TO USE	25L	1 x 25L



### BLUE MAC PORTABLE TOILET FLUID\_CONCENTRATE

#### Organic portable toilet digester

Proprietary Blend Natural Organic Formulation for Portable Toilet Systems (Formaldehyde free).

BLUE MAC Portable Toilet Fluid is designed for use in portable toilets including: -

\* Construction site toilets \* Caravans, trains and busses \* Marine vessels \* VIP portable mobile toilets

\* Underground portable toilet in mines \* Events (music, sport)

To accelerate the degradation of organic matter and provide exceptional bacteriostatic and disinfectant properties for these applications.

CODE	DESCRIPTION	SIZE	PACK SIZE
HD 88 /25	Concentrate	25L	1 x 25L

**NOTE: ON ORDER ONLY WITH 5+ DAYS ETA**



### ODORITE FEM FRESH\_READY TO USE

Fem Fresh is a dry formulation for the biological control of odours associated with solid wastes contained in sealed Sanitary Bins

CODE	SIZE	PACK SIZE
HD 103 /5	5kg	4 x 5kg Bucket
HD 103 /30	10g	100 x 10g Sachets

Recommended Dilution Rate: 1 : 9 Ready to Use



### ODORITE BIO CUBES - 40G\_READY TO USE

#### Bio-Enzyme degradation of organic waste and deodoriser for urinals

BioCube has been specially designed to clean and to reduce odour problems and to be environmentally friendly when compared to conventional chemical and or PDB urinal blocks.

Each biological block contains powerful biological cleaning agents, which are proven to maintain, clean, de-odorise urinals but also the traps and pipes.

CODE	SIZE	PACK SIZE
HD 89 /5	5kg Ready to Use	4 x 5kg Buckets



PRODUCT RANGE: GREEN WORX



### MICROZYME SURF CLEAN 10 X FF\_CONCENTRATE + READY TO USE



#### Degradation of hydrocarbon spills

A visually cleaner garage floor and driveway with less effort. Enhance the office, factory and your homes curb appeal with a fresh, clean sidewalk. Deep-clean tough stains in the workshop, factory garage and basement with a product that is safer for family and pet than the chemical alternatives. More effective than a solvent-based product, yet is safe to use and friendly to the environment. Use one product for a wide range of cleaning applications including garage floors, basements, outdoor furniture, tools and equipment.

CODE	DESCRIPTION	SIZE	PACK SIZE
HD 93 /5	10 X FF - Concentrate	5L	4 x 5L
HD 93 /25	10 X FF - Concentrate	25L	1 x 25L
HD 93 /5 RTU	READY TO USE*	5L	4 x 5L
HD 93 /25 RTU	READY TO USE*	25L	1 x 25L

\* Ready to use household degradation of hydrocarbon / oil spills

### GRIME AWAY 10 X FF\_CONCENTRATE + READY TO USE WIPES



#### Hydrocarbon (Oil, grease and diesel) organic solvent

CODE	DESCRIPTION	SIZE	PACK SIZE
HD 94 /5	10 X FF - Concentrate	5L	4 x 5L
HD 94 /25	10 X FF - Concentrate	25L	1 x 25L
HD 95 /150	READY TO USE WIPES	150 wipes	1 x Bucket

## HARD SURFACE CLEANING SOLUTIONS

### ODORITE ULTRA DISH WASHING LIQUID 4 X ENZYME\_ CONCENTRATE



Food Safe Enzyme Deep Clean - SABS 1828 Accredited  
- 30 times concentrated enzyme hard surface deep clean  
- Formulation can be used in food processing environments

CODE	DESCRIPTION	SIZE	PACK SIZE
HD 78 /5	30 X Concentrate	5L	4 x 5L
HD 78 /25	30 X Concentrate	25L	1 x 25L

Recommended Dilution Rate: 2.5ml - 5ml per 10L water

### ODORITE ULTRA BIO FLOOR + TILE CLEANER MANUAL & AUTO SCRUBBER \_CONCENTRATE



#### Concentrated Bio Enzyme Floor + Tile Cleaner

CODE	DESCRIPTION	SIZE	PACK SIZE
HD 96 /5	Floor + Tile Auto Scrubber	5L	4 x 5L
HD 96 /25	Floor + Tile Auto Scrubber	25L	1 x 25L
HD 96 M /5	Floor + Tile Manual Cleaning	5L	4 x 5L
HD 96 M/25	Floor + Tile Manual Cleaning	25L	1 x 25L

# HAND CARE

## 400ML SPRAY SOAP DISPENSER PLASTIC

CODE  
SSD 001  
(RSZ 5607)

COLOUR  
Grey & White

SIZE  
1 x 400ml

CASE  
12



## 400ML SPRAY SOAP DISPENSER S/STEEL

CODE  
SSDS / S  
(RSZ 9012BD55001)

COLOUR  
Stainless Steel

SIZE  
1 x 400ml

CASE  
12



## 400ML SPRAY ANTI-BAC HAND SOAP

CODE  
ABSR 001  
(RVU 5758)

DESCRIPTION  
Refill

SIZE  
1 x 400ml

CASE  
12



## 400ML SPRAY HAND SANITISER

CODE  
IHSRR 001  
(RVU 4650)

DESCRIPTION

SIZE  
1 x 400ml

CASE  
12



PRODUCT RANGE: TECHNICAL CONCEPTS

## 500ML FOAM SOAP DISPENSER PLASTIC



**CODE**  
GFX 001  
(1787150)

**COLOUR**  
FLEX - White

**SIZE**  
1 x 500ml

**CASE**  
10

## 500ML ENRICHED FOAM HAND SOAP



**CODE**  
EFAB 001  
(3486607)

**COLOUR**  
Anti-Bac E2 Hand  
Wash (EN 1499)

**SIZE**  
1 x 500ml

**CASE**  
5

## HAND CARE

### 800ML FOAM SOAP DISPENSER PLASTIC

**CODE**  
FSD 001  
(FG 450013)

**COLOUR**  
Grey & White

**SIZE**  
1 x 800ml

**CASE**  
10



### 800ML ENRICHED FOAM HAND SOAP

**CODE**  
ABFS 001  
(RVU 8528)

**COLOUR**  
Anti-Bacterial  
Foam Soap

**SIZE**  
1 x 800ml

**CASE**  
6



PRODUCT RANGE: TECHNICAL CONCEPTS



## 800ML ENRICHED FOAM HAND SANITISER



### CODE

FHRS 001  
(RVU 8585)

### COLOUR

Hygiene Foam  
Hand Rub Sanitiser  
(ALCOHOL FREE)

### SIZE

1 x 800ml

### CASE

6

## 1100ML AUTO FOAM DISPENSER PLASTIC



### CODE

AFD 001  
(FG 750412)

### COLOUR

White

### SIZE

1 x 1100ml

### CASE

10

PRODUCT RANGE: TECHNICAL CONCEPTS





## HAND CARE

### 1100ML AUTO FOAM HAND SOAP

**CODE**  
AFABR  
(RVU 8528)

**COLOUR**  
Auto Foam Anti-  
Bacterial Soap

**SIZE**  
1 x 1100ml

**CASE**  
4



### 1000ML AUTO FOAM HAND SANITISER

**CODE**  
1869697

**COLOUR**  
Auto Foam  
Alcohol Plus  
Hand Rub

**SIZE**  
1 x 1000ml

**CASE**  
4



PRODUCT RANGE: TECHNICAL CONCEPTS



## PULSE MOP SET



Clean more square feet in less time with the new Rubbermaid Pulse™. Industry-best microfiber, on-board reservoir, and user-controlled release of solution mean cleaner floors faster, easier, and more effectively.

- \* Red ergonomic trigger handle dispenses three streams of cleaning solution with each press.
- \* Lightweight construction - weighs only 4 lbs when fully loaded with solution.
- \* High-capacity refillable reservoir holds 21 oz of solution to clean up to 850 sq feet of floor space.
- \* Reservoir windows allow easy monitoring of fluid level.
- \* 18" Quick-Connect Frame included.
- \*\* Also works with Rubbermaid 11" and 24" Quick-Connect Frames and Pads

**CODE**  
PULSE001

**DESCRIPTION**  
Pulse Unit with 2 Micro Fibre Mop Sleeves

## PULSE CADDY



Clean more square feet in less time with the Rubbermaid Pulse™. Industry-best microfiber, on-board reservoir, and user-controlled release of solution mean cleaner floors faster, easier, and more effectively.

- \* High-capacity Caddy allows users to clean up to 10,000 sq ft - reducing the frequency of trips to the supply closet.
- \* Designed to be securely transported in Rubbermaid Cleaning Carts for efficient on-the-go refill.

**CODE**  
PULSC

**DESCRIPTION**  
Pulse Caddy

## QUICK CONNECT HI-PERFORMANCE FLEXIBLE WAND



Rubbermaid Flat 20" long wand reaches into narrow, hard-to-reach spaces to effectively remove dust, dirt and grime.

- \* High pile sleeve for flexi wand
- \* Use damp or dry
- \* Excellent for dust, hair and larger debris
- \* Measures 1-1/8" length by 1-1/8" width by 28-3/8" height

**CODE**  
FGQ85300  
FGQ850-00

**DESCRIPTION**  
Quick Connect Flexible Wand with Micro Fibre Sleeve  
Flexible Duster Microfibre Replacement sleeve

## QUICK CONNECT HI-PERFORMANCE FLEXIBLE WAND



Rubbermaid Flat 20" long wand reaches into narrow, hard-to-reach spaces to effectively remove dust, dirt and grime.

- \* High pile sleeve for flexi wand
- \* Use damp or dry
- \* Excellent for dust, hair and larger debris
- \* Measures 1-1/8" length by 1-1/8" width by 28-3/8" height

**CODE**  
FGQ 85300  
FGQ86100

**DESCRIPTION**  
Quick Connect Flexible Wand with Hi-Performance Sleeve  
Flexi Dust Wand H/P Replacement Sleeve

## BYOTROL FOAMING HAND SANITISER

**Powerful:** Independently tested to be effective against many pathogens commonly transmitted by hands including *S. aureus*, *E. coli*, *Salmonella*, *Herpes Simplex Virus* and H1N1 Swine Flu.  
**Longer-Lasting:** Long-lasting and continues to work even after it dries providing up to 6 hours barrier protection in-between hand hygiene protocols.  
**Gentle:** Byotrol does not strip away the skin's natural oils and does not lead to dermatitis, often associated with alcohol-based sanitisers.

CODE	DESCRIPTION	SIZE	PACK SIZE
BYO050	FOAM PUMP Ready to Use	50ml	30 per pack
BYO 600	FOAM PUMP Ready to Use	600ml	15 x 600ml
B1919 /800	SACHET Ready to Use	800ml	10 x 800ml
B1919 /5	READY TO USE	5L	4 x 5L
B1919 /25	READY TO USE	25L	1 x 25L



## BYOTROL SURFACE SANITISER

**Surface Sanitiser** provides powerful germ protection that outlasts all leading disinfectants and is gentle on the surfaces themselves. It is a non-rinse sanitiser. It is water-based, non-corrosive & non-hazardous in use and kind to the environment.  
**Application Areas:** All hard surfaces including food prep areas, stainless steel, plastics, tiles, floors, walls, fridges & sanitary ware.

CODE	DESCRIPTION	SIZE	PACK SIZE
NAN 002	READY TO USE	750ml	6 per pack
B1925 /5	CONCENTRATE	5L	4 x 5L
B1925 /25	CONCENTRATE	25L	1 x 25L
B1925/RTU	READY TO USE	5L	4 x 5L



## BYOTROL FOAMING HAND SOAP

**Powerful:** Effective against most cleaning challenges.  
**Longer-Lasting:** After rinsing, apply Byotrol Hand Sanitiser for residual protection.  
**Gentle:** Byotrol does not strip away the skin's natural oils and does not lead to dermatitis, often associated with alcohol-based sanitisers.

CODE	DESCRIPTION	SIZE	PACK SIZE
BYO060	FOAM PUMP Ready to Use	50ml	30 per pack
B1959/600	FOAM PUMP Ready to Use	600ml	15 x 600ml
B1959/800	SACHET Ready to Use	800ml	10 x 800ml
B1959/5	READY TO USE	5L	4 x 5L
B1959/25	READY TO USE	25L	1 x 25L

6 HOURS EFFICACY

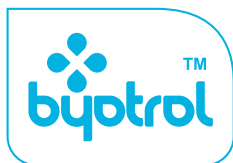


## BYOTROL SANITISING WIPES

**Surface Sanitising Wipes** provide convenient, powerful germ protection. Ideal for both daily work spaces and expensive equipment that requires clean and sanitisation between use. Approved for food use. It is water based, non-corrosive and non-hazardous in use and kind to the environment. All hard surfaces including food prep areas, stainless steel, plastics, tiles, floors, walls, fridges & sanitary ware.

CODE	DESCRIPTION	SIZE	PACK SIZE
NAN050	20cm x 20cm	1000 wipes	2 per pack





The Hygiene Revolution™

## The science behind Byotrol

Underpinning the performance of the Byotrol product range is our unique Amphillicelle™ structure which combines biocides in a way that amplifies their effectiveness, making them work longer and more gentle than previously thought possible. Byotrol technology is protected by a series of worldwide PCT patents.

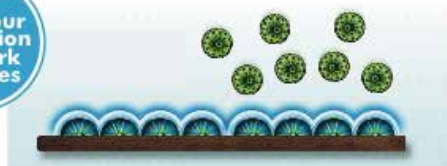


Amphillicelle™

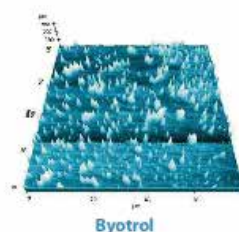
- Hydrophobically nucleated micelle
- Hydrophobic core surrounded by biocides
- Hydrophilic shell forming a colloidal sol
- Circa 60 mixed biocide molecules per Amphillicelle™
- Amphiphillic™ character wet and dry (works when dry)
- Autophobic so that the Amphillicelles™ repel each other to create a uniform distribution

### Forming an invisible protective barrier on all surfaces

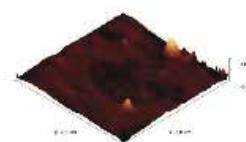
24 hour protection on work surfaces



This AFM micrograph shows the distribution of Byotrol on a surface. Note how it creates an incredibly hostile environment for all microbes.



Byotrol



Quaternary Ammonium Compound

## POWERFUL

*Byotrol is a powerful disinfectant which delivers broad spectrum antimicrobial performance against virtually all micro-organisms. Byotrol products have been subject to an extensive range of laboratory testing both in our own laboratories and by independent test facilities. Byotrol has been certified to European Standards EN1276 against bacteria, EN14476 against viruses, EN1650 against fungi and EN13697, modified to demonstrate real-life residual efficacy on surfaces.*

## Byotrol kills / destroys

### Bacteria

- ✓ Campylobacter jejuni
- ✓ Clostridium difficile (veg)
- ✓ Corynebacterium jeikeium
- ✓ Escherichia coli
- ✓ Escherichia coli O157:H7
- ✓ Enterococcus hirae
- ✓ Klebsiella pneumoniae
- ✓ Listeria monocytogenes
- ✓ Pseudomonas aeruginosa
- ✓ Salmonella typhimurium
- ✓ Staphylococcus aureus
- ✓ Staphylococcus epidermidis
- ✓ Streptococcus pyogenes
- ✓ Yersinia enterocolitica
- ✓ Acinetobacter baumannii

### Viruses

- ✓ Herpes simplex Type 1
- ✓ Feline Calicivirus (surrogate for Norovirus)
- ✓ Influenza type A (H1N1 - Swine Flu)
- ✓ Murine Norovirus (surrogate for Norovirus)
- ✓ Rotavirus

### Fungi & Yeast

- ✓ Aspergillus brasiliensis
- ✓ Candida albicans
- ✓ Saccharomyces cerevisiae
- ✓ Trichophyton interdigitale
- ✓ Trichophyton mentagrophytes
- ✓ Trichophyton rubrum

PRODUCT RANGE: BYOTROL

# FILTERS, BOPPS AND WAX PAPERS

## BOPP SEPARATOR DISCS

Biaxially Oriented Polypropylene Film more commonly known as BOPP is usually used for applications that require moisture resistance, optical clarity and high tensile strength such as Food and Beverage packaging, Medical packaging and more. We can cut BOPP down to any size or shape required. Suitable for meat separation and other food separating requirements.

CODE	DESCRIPTION	SIZE	PACK SIZE
BOPP001	BOPP Separator Disc 100	100mm	25 x 1000
BOPP002	BOPP Separator Disc 130	130mm	25 x 1000



## WAX INTERLEAVELETS

We wax MBGK paper on site and can cut to any shapes or sizes required. We can also supply in roll format. After required these can be used to separate burger patties.

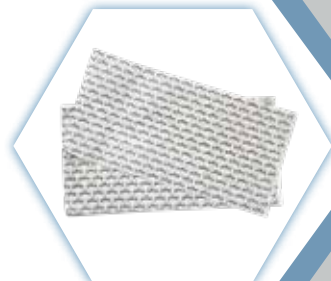
CODE	DESCRIPTION	SIZE	PACK SIZE
WAX001	WAX Separator 100	100mm x 100mm	12 x 1000
WAX002	Wax Separator 113	113mm x 113mm	12 x 1000
WAX003	Wax Separator 127	127mm x 127mm	20 x 1000



## PRINTABLE WAX INTERLEAVELETS

We wax MBGK paper on site and can cut to any shapes or sizes required. We can also supply in roll format. After required these can be used to separate burger patties.

CODE	DESCRIPTION	SIZE	PACK SIZE
WAXP001	Wax Separator Printed	TBA	TBA





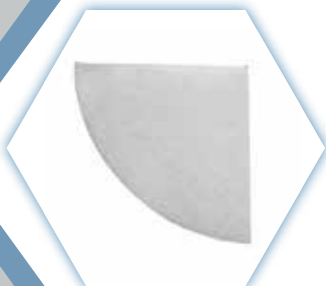
## CONICAL FILTER

*We manufacture food safe oil filters for the food industry. We can supply conical filters for chip fryers and PHT filters for Henny Penny machines. 147gsm; cross laid.*

**CODE**  
FILTER003

**DESCRIPTION**  
Conical Filter

**SIZE**  
245mm



## HENNY PENNY FILTER

*We manufacture food safe oil filters for the food industry. We can supply conical filters for chip fryers and PHT filters for Henny Penny machines. PX043; 43gsm PES Cross laid material; White cotton stitch; Hexane Free*

**CODE**  
FILTER004

**DESCRIPTION**  
Henny Penny Filter



## COLLECTRAMATIC FILTER

*We manufacture food safe oil filters for the food industry. We can supply conical filters for chip fryers and PHT filters for Henny Penny machines. PX043; 43gsm PES Cross laid material; White cotton stitch; Hexane Free*

**CODE**  
FILTER001

**DESCRIPTION**  
Collectramatic Filter

